



UniFi[®] VIDEO

Unified Video Surveillance Management

Camera Models: UVC, UVC-Dome, UVC-Micro, UVC-Pro
NVR Model: UVC-NVR

Scalable Day or Night Surveillance

Advanced Hardware with Full HD Video

Powerful Features and Analytic Capabilities



UniFi® VIDEO

Cameras

UniFi® Video Camera

The UniFi® Video Camera provides 720p HD resolution at 30 FPS and is designed for use indoors or outdoors under an overhang. The camera has infrared LEDs with automatic IR cut filter. It is available in a single-pack or 3-pack.

- 720p HD, 30 FPS
- Built-in Microphone
- Wall, Ceiling, or Pole Mount
- Powered through Ethernet



UniFi® Video Camera Dome

Designed for indoor use, the UniFi® Video Camera Dome discreetly integrates into any ceiling surface. The camera features a wide-angle lens and provides 720p HD resolution at 30 FPS. The camera has infrared LEDs with automatic IR cut filter. It is available in a single-pack or 3-pack.

- 720p HD, 30 FPS
- Wide-Angle Lens
- Built-in Microphone
- Powered through Ethernet



Cameras



The UniFi Video Camera Pro has a weatherproof design that is ideal for outdoors but can also be used indoors. It features full 1080p HD resolution. The camera has a 3x optical zoom and infrared LEDs with automatic IR cut filter. It is available in a single-pack.

- 1080p Full HD, 30 FPS
- 1/3" Wide Dynamic Range (WDR) Sensor
- Wall, Ceiling, or Pole Mount
- Powered through Ethernet, 802.3af Compatible



About the size of a golf ball, the UniFi Video Camera Micro provides 720p HD resolution at 30 FPS. The UniFi® Video Camera Micro is designed for use indoors. A magnetic base is used for power transfer and 3-axis viewing adjustment. Mount it magnetically on a metal surface, or integrate it seamlessly into any corner, wall, or ceiling.

The UniFi Video Micro features Dual-Band 2.4 GHz and 5 GHz Wi-Fi connectivity for streaming HD video. The camera has infrared LEDs with automatic IR cut filter. It is available in a single-pack or 3-pack.

- 720p HD, 30 FPS
- Built-in Microphone
- Wall, Ceiling, or Corner Mount
- Dual-Band Wi-Fi Connectivity



Accessories

Dedicated Hardware NVR with UniFi Video software pre-installed

The UniFi NVR is a plug-and-play NVR appliance with low power consumption. The UniFi Video software is pre-installed for quick and easy deployment. No additional software is required. Plug it into the network, go through the configuration wizard, and it is set up and ready to go.

The UniFi NVR has a built-in 500 GB hard drive. This equates to approximately 1200 recording hours at 480p resolution or 400 recording hours at 720p resolution (numbers can vary depending on the frame rate).



Large Pole-Mount Accessory for UniFi Video Camera PRO

The UniFi Video Camera PRO Large Pole Mount, model UVC-Pro-M, accommodates larger poles up to 160 mm wide and mounts one or two UniFi Video Camera PRO devices on a single pole.

- Industrial-Grade Metal Mount
- Fits up to 160 mm Diameter Poles
- Mounts One or Two Cameras



UniFi Video Camera PRO Cable Accessory

The UniFi Video Camera PRO Cable Accessory, model UVC-Pro-C, is designed for use with the UVC PRO. In addition to the convenient Reset button, the UVC PRO Cable Accessory provides Ethernet, Audio In/Out, and mFi RJ45 connectors.





Software

The UniFi Video software is pre-installed on the UniFi NVR for quick and easy deployment. The UniFi Video software can also be downloaded and installed on a Windows/Linux system*.

Features

Feature-Packed User Interface Accessible from a web browser, the UniFi Video interface was designed to be easy to use yet packed with advanced features. The UniFi Video interface is incredibly intuitive and loaded with powerful features such as detailed statistical reporting, multiple views, versatile camera settings, advanced analytics, and customizable event recordings.

Plug and Play Installation Automatic camera detection in the UniFi Video software makes it easy to install and deploy cameras. UniFi Video Camera settings are integrated into the UniFi Video software. Configure camera settings, reboot the camera, or upgrade the firmware from the UniFi Video interface.

Mobile Support The UniFi Video web interface is accessible on iOS and Android tablets and phones.

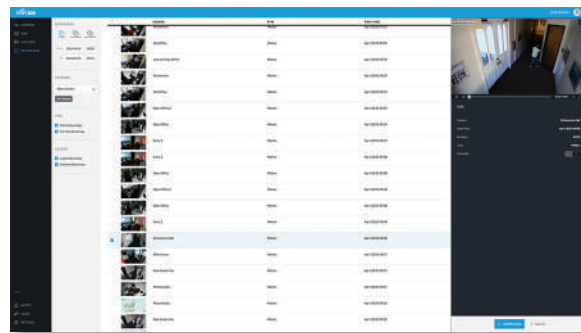
Camera-Based Motion Detection The UniFi Video cameras handle motion detection instead of the server, relieving the workload on the server and ensuring that compression and noise won't affect motion detection.

Additional Live Views Playlists can be created with a configurable live camera feed rotation. Define the cameras you want included in the playlist and how long you want them to appear on the screen before moving on to the next live feed.

Disk Management Features UniFi Video has automatic recording management to free up disk space. User-definable disk space and date-based auto purge allow users to keep a set amount of free disk space or automatically delete recordings after a certain number of days. Another storage feature is the ability to map external USB or network storage drives.

Cost-Effective Solution Shattering conventional industry thinking, Ubiquiti offers UniFi Video's powerful IP surveillance software at no additional cost. No huge upfront costs, no monthly subscription fees.

* UniFi Video can be installed on a 64-bit Microsoft Windows 8/7, Ubuntu 12.04 (or above), or Debian 7.0 (or above) system with an Intel or compatible 1.86 GHz (or above) processor and a minimum of 2 GB RAM.



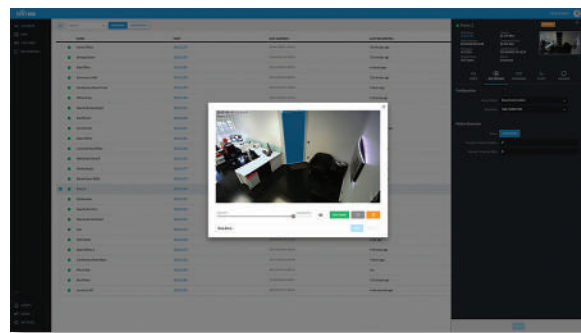
Event Recordings

UniFi Video software provides a variety of options and settings to customize what your cameras record.



Maps

Upload a map of your location(s) or use Google Maps to represent the areas where your cameras are located.



Powerful Analytic Capabilities

Customize your own motion detection zones. You can place several zones and set their alarm sensitivity levels as high or low as the situation demands.



Specifications

NVR Specifications	
Dimensions	135 x 190 x 25 mm (5.31 x 7.48 x 0.98")
Weight	483 g (17 oz)
Processor	Intel D2550
Memory	4 GB
Hard Drive Capacity	500 GB
Ports	(1) 10/100/1000 Ethernet
Power Supply	65 W, 19V, 3.42A
Certifications	CE, FCC, IC

UniFi Video Software Specifications	
Software	Browser-Based Interface, Tablets, and Smartphones Supported
System Setup	Plug-and-Play Installation, Automatic Camera Detection
NVR Camera Support	Recommended for up to 20 UniFi Video Cameras. Supports up to 50
Supported Devices	Operating Systems: Windows, Apple, and Linux Browsers: Chrome, Internet Explorer 10 (or above), Firefox, and Safari Smartphones: iPhone and Android
Media Format	MP4 (H.264/AAC)
Scheduling	Day/Time/Camera Scheduled Video Recording/Motion Detection/Email Alerts
Views	Custom Views of Multiple Cameras Full Screen Capability



Specifications

UVC-Micro Specifications	
Dimensions	40.7 x 40.8 mm (1.60 x 1.61") - Camera Body with Base, Diameter x Height
Weight	Camera Body and Base 53 g (1.87 oz.), Power Cord 65 g (2.29 oz.)
Microphone	Yes
Sensor	Progressive Scan RGB CMOS 1/4"
Lens	EFL=2.38 mm / F2.4
Night Mode	IR LED with Mechanical IR Cut Filter
Buttons	Factory Reset Button
LED	Blue
Power Method	Adapter (5.5V)
Power Supply	5.5V Adapter with 5 m Cable
Maximum Power Consumption	3.2W
Certifications	CE, FCC, IC
Mounting	Wall/Ceiling/Corner Adapter Kit Included
Operating Temperature	0 to 35° C (32 to 95° F)
Operating Humidity	20 - 90% Noncondensing

Video	
Video Compression	H.264
Resolution	720p HD (1280 x 720)
Maximum Frame Rate	30 FPS
Image Setting	Brightness, Contrast, Sharpness, Saturation, Noise Reduction, 50/60 Hz

General	
Processor	ARM 1136J-S 528 MHz
Memory	256 MB DDR3
Networking Interface	Dual-Band Wi-Fi
View Angle	54.15° (V) 79.13° (H) 88.45° (D)





Specifications

UVC Specifications	
Dimensions	225 x 75 x 75 mm (8.85 x 2.95 x 2.95")
Weight	373 g (13.1 oz)
Ports	(1) 10/100 Ethernet Port, microSD Card Slot
Sensor	Progressive Scan RGB 1/4" CMOS Image Sensor
Lens	3.6 mm/F1.8
Power LED	Amber
Link/Activity LED	Green
Night Mode	IR LED with Mechanical IR Cut Filter
Microphone	Yes
Buttons	Factory Reset Button
Power Method	Passive Power over Ethernet (12-24V)
Power Supply	24V, 0.5A PoE Adapter Included
Maximum Power Consumption	4.5 W
Certifications	CE, FCC, IC
Mounting	Pole/Wall/Ceiling
Operating Temperature	-30 to 50° C (-22 to 122° F)
Operating Humidity	20 - 90% Noncondensing

Video	
Video Compression	H.264
Resolution	720p HD (1280 x 720)
Maximum Frame Rate	30 FPS
Image Setting	Brightness, Contrast, Sharpness, Saturation, Noise Reduction, 50/60 Hz

General	
Processor	ARM 1136J-S, 528 MHz
Memory	256 MB DDR3
View Angle	56.14° (H) 36.86° (V) 64.33° (D)





Specifications

UVC-Dome Specifications	
Dimensions	111 x 96 x 96 mm (4.4 x 3.8 x 3.8")
Weight	178 g (6.28 oz)
Ports	(1) 10/100 Ethernet, MicroSD Card Slot
Sensor	1/4" CMOS Image Sensor
Lens	1.96 mm/F2.0
Power LED	Amber
Link/Activity LED	Green
Night Mode	IR LED with Mechanical IR Cut Filter
Microphone	Yes
Buttons	Factory Reset Button
Power Method	Passive Power over Ethernet (12-24V)
Power Supply	24V, 0.5A PoE Adapter Included
Maximum Power Consumption	4 W
Certifications	CE, FCC, IC
Mounting	Ceiling Mount
Operating Temperature	0 to 40° C (32 to 104° F)
Operating Humidity	20 - 90% Noncondensing

Video	
Video Compression	H.264
Resolution	720p HD (1280 x 720)
Maximum Frame Rate	30 FPS
Image Setting	Brightness, Contrast, Sharpness, Saturation, Mirror, Flip, Noise Reduction, 50/60 Hz

General	
Processor	ARM 1136J-S 528 MHz
Memory	256 MB DDR3
Flash Memory Support	(1) MicroSD Card Slot
View Angle	88.8° (H) 63.0° (V) 98.2° (D)





Specifications

UVC-PRO Specifications

Dimensions	322 x 100 x 100 mm (12.67 x 3.93 x 3.93")
Weight	2.15 kg (4.73 lbs)
Ports	(1) 10/100 Ethernet
Sensor	1/3" WDR Sensor
Lens	3x Optical Zoom, F= 3-9 mm
Night Mode	IR LED with Mechanical IR Cut Filter
Buttons	Factory Reset Button
Power Method	Passive Power over Ethernet (48V, 0.5A), 802.3af
Power Supply	48V, 0.5A PoE Adapter Included
Maximum Power Consumption	12.5 W
Certifications	CE, FCC, IC
Mounting	Pole/Wall/Ceiling Adapter Kit Included
Protection Rating	IP67, Water and Dust Resistant
Operating Temperature	-40 to 50° C (-40 to 122° F)
Operating Humidity	20 - 90% Noncondensing

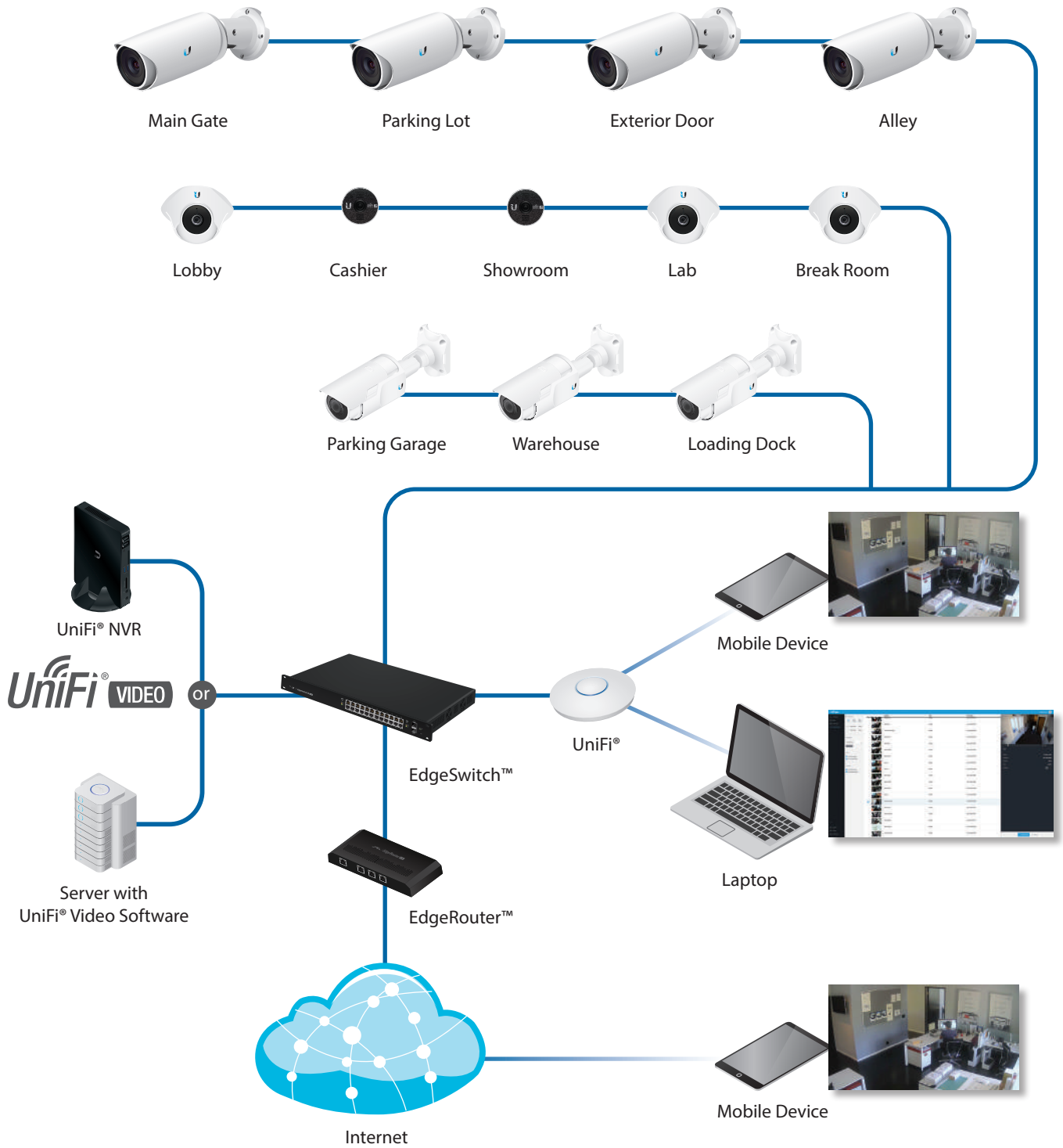
Video

Video Compression	H.264
Resolution	1080p Full HD
Maximum Frame Rate	30 FPS
Image Setting	Brightness, Contrast, Sharpness, Saturation, Noise Reduction, 50/60 Hz

General

Processor	ARM 1136J-S 528 MHz
Memory	256 MB DDR3, 256 MB Flash
View Angle	44.4° W - 15.7° T (V) 81.0° W - 27.9° T (H) 94.0° W - 32.1° T (D)





UniFi Video Camera
Indoor/Outdoor
720p HD Video

UniFi Video Camera Dome
Indoor
720p HD Video

UniFi Video Camera Micro
Indoor
720p HD Video

UniFi Video Camera PRO
Indoor/Outdoor
1080p HD Video

