



TOUGH Switch™ PoE

Advanced Power over Ethernet Controllers

Models: TS-5-POE, TS-8-PRO, TS-16-CARRIER

Gigabit PoE Ports

Intuitive Configuration Interface

Advanced Switch Management Features



TOUGHSwitch™ PoE

Advanced Gigabit PoE Managed Switch

Introducing the Advanced Power over Ethernet Controllers, TOUGHSwitch™ PoE from Ubiquiti Networks. TOUGHSwitch PoE delivers reliable passive PoE and fast 10/100/1000 Mbps connectivity to attached Ubiquiti devices and other devices that support passive PoE.

To connect your PoE devices, simply enable PoE in the easy-to-use TOUGHSwitch Configuration Interface. Each port can be individually configured to provide PoE, so both PoE and non-PoE devices can be connected.

TOUGHSwitch is available in multiple versions to meet your deployment needs.

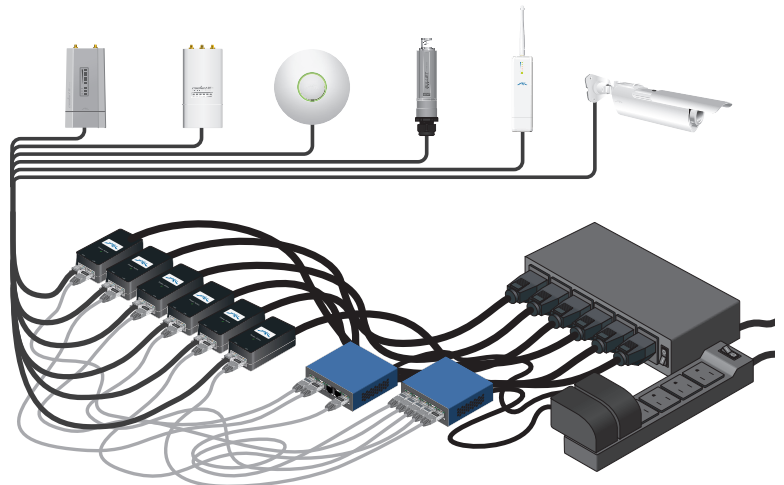
- TOUGHSwitch PoE is a cost-effective, 5-port Gigabit switch with 24V PoE support.
- TOUGHSwitch PoE PRO is an industrial-strength, 8-port Gigabit switch with 150 watts of power capable of powering 24V or 48V devices. Output voltage is controlled by the software.
- TOUGHSwitch PoE CARRIER features dual TOUGHSwitch PoE PRO systems in a rack-mountable, 1U form factor with 300 watts of power supporting up to 16 devices.

Simplify Your Deployment

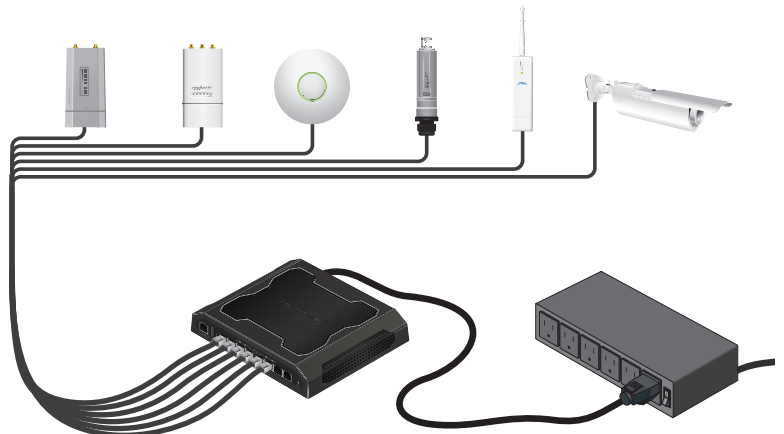
TOUGHSwitch PoE allows network architects to design cleaner, less cluttered deployments. For example, integrating one TOUGHSwitch PoE PRO can eliminate the need for the following:

- 8 PoE adapters
- 8 power cords
- 8 power outlets
- 8 Ethernet patch cables

TOUGHSwitch PoE deployments increase efficiency and greatly reduce potential failure points – resulting in faster installations and less maintenance and troubleshooting.



Deployment without TOUGHSwitch



TOUGHSwitch 8-Port PoE PRO Deployment

Intuitive Configuration Interface

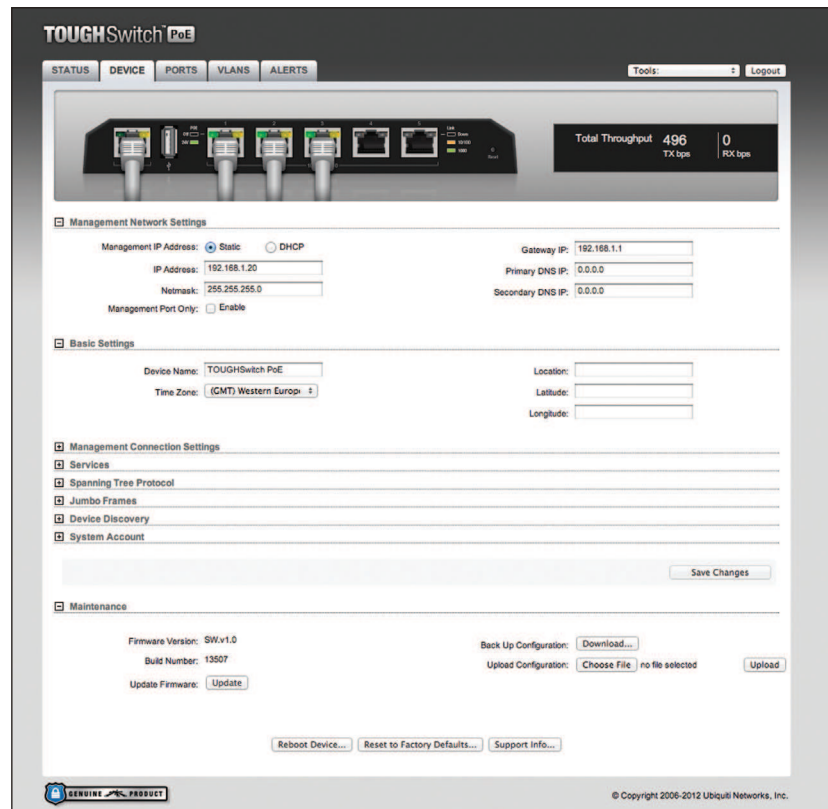
TOUGHSwitch PoE provides a user-friendly configuration interface designed for efficient setup and control. Accessed via a secured management port and web browser, the TOUGHSwitch Configuration Interface provides intuitive management with a virtual view of the ports, showing physical connectivity, speed, and PoE status.



Advanced Features

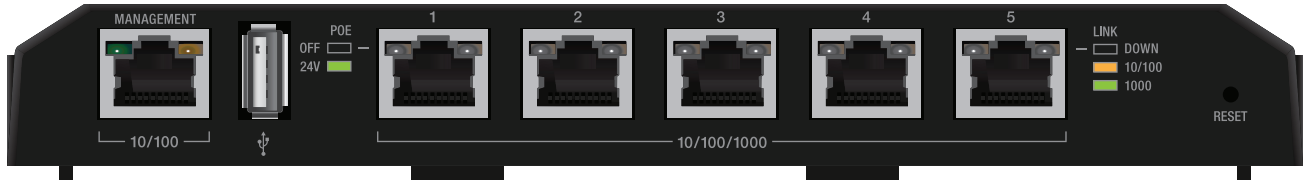
TOUGHSwitch PoE is loaded with a variety of advanced features, including:

- Port monitoring
- System connection and management services
- Virtual Local Area Network (VLAN) configuration
- Spanning Tree Protocol (STP)/ Rapid Spanning Tree Protocol (RSTP)
- Jumbo Frame Support
- Ping Watchdog
- Configurable alerts



Models

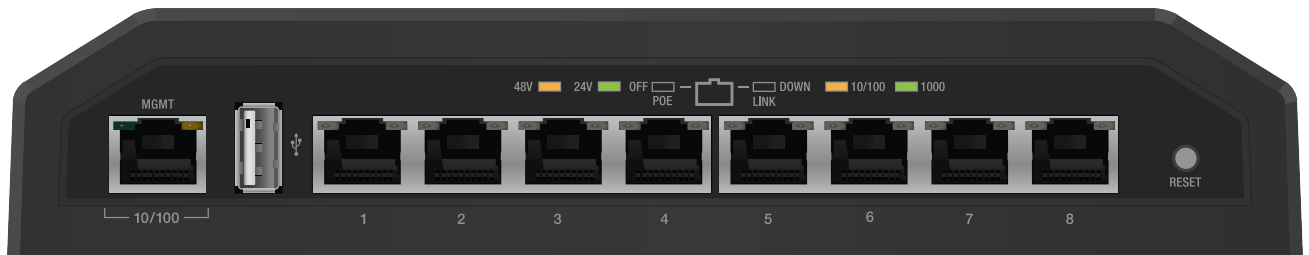
TOUGHSwitch™ PoE



Features:

- 5 Gigabit PoE Ports
- 24V Configurable Passive PoE
- TOUGHSwitch PoE Configuration Interface
- Wall-Mountable

TOUGHSwitch™ PoE PRO



Features:

- 8 Gigabit PoE Ports
- 24V/48V Configurable Passive PoE
- 150 W Power
- TOUGHSwitch PoE Configuration Interface
- Tough Full Metal and Rubber Casing

TOUGHSwitch™ PoE CARRIER



Features:

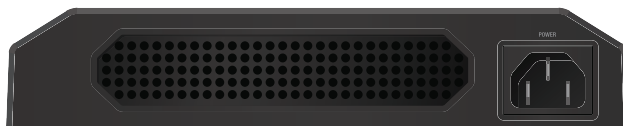
- 16 Gigabit PoE Ports
- 24V/48V Configurable Passive PoE
- 300 W Power
- TOUGHSwitch PoE Configuration Interface
- 1U Rack-Mount Form Factor

Specifications

8-Port TOUGHSwitch PoE PRO	
Dimensions	210 x 185 x 41 mm
Weight	1.24 kg
Power Input	110-120VAC / 210-230VAC
Max. Power Consumption	150 W
PoE Out Voltage Range	45-48VDC / 22-24VDC
Max. PoE Wattage Per Data Port	18W
ESD Rating	24 kV Air / 24 kV Contact
PoE Method	Passive
Button	Reset
USB Port	2.0 Type A (Reserved for Future Use)
Processor	MIPS24K 400 MHz
System Memory	64 MB
Code Storage	8 MB
Certifications	CE, FCC, IC
Operating Temperature	-25 to 55°C (-13 to 131° F)
Operating Humidity	90% Non-Condensing
PoE Configurable Per Port	
Management Port	N/A
Data Ports	Off/24V/48V
LEDs Per Port	
Management Port	Power/Link/Activity
Data Ports	PoE, Speed/Link/Activity
Networking Interfaces	
Management Port	(1) 10/100 Ethernet Port
Data Ports	(8) 10/100/1000 Ethernet Ports



Front Panel



Back Panel



Top View