



# SUPER RANGE CARDBUS

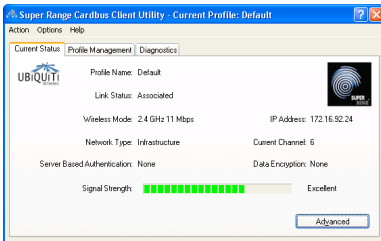
Connect farther and faster

The Super Range Cardbus is the world's first 802.11a/b/g Hi-Power Cardbus Card. It features a sleek design and MMCX connectors that allow superior client range and throughput performance through the use of high-gain external antennas.

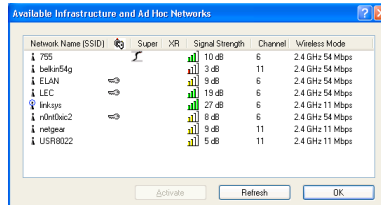


MAIN

AUX



Win XP Client Utility



## FEATURES/PERFORMANCE

### 802.11a

### 802.11b/g

#### Chipset

Atheros AR5213 MAC/BB  
Atheros AR2112 ROC

#### Temperature Rating

Storage -70 - +85 C  
Operation -40 - +60C

#### Compliance

CE (SR2CE, 200mW version)  
FCC ID: SWX-SRC

#### Transmit Power

Rate	Power
6-24 Mbps	20 dBm, +/- 1dB
36 Mbps	19 dBm, +/- 1dB
48 Mbps	18 dBm, +/- 1dB
54 Mbps	16 dBm, +/- 1dB

#### Current Consumption @3.3V

Transmit	
6-24 Mbps	850mA, +/-100mA
36 Mbps	700mA, +/- 100mA
48 Mbps	650mA, +/-100mA
54 Mbps	550mA, +/-100mA

Receive 350mA, +/-50mA

#### Receive Sensitivity

Rate	Level
6 Mbps	-92 dBm, +/- 2dB
9 Mbps	-91 dBm, +/- 2dB
11 Mbps	-90 dBm, +/- 2dB
12 Mbps	-89 dBm, +/- 2dB
18 Mbps	-88 dBm, +/- 2dB
24 Mbps	-84 dBm, +/- 2dB
36 Mbps	-81 dBm, +/- 2dB
48 Mbps	-79 dBm, +/- 2dB
54 Mbps	-75 dBm, +/- 2dB

#### Transmit Power

Rate	Power
1-24 Mbps	24 dBm, +/- 1dB
36 Mbps	23 dBm, +/- 1dB
48 Mbps	22 dBm, +/- 1dB
54 Mbps	20 dBm, +/- 1dB

#### Current Consumption @3.3V

Transmit	
1-24 Mbps	900mA, +/-100mA
36 Mbps	750mA, +/-100mA
48 Mbps	700mA, +/-100mA
54 Mbps	600mA, +/-100mA

Receive 350mA, +/-50mA

#### Receive Sensitivity

Rate	Level
1 Mbps	-96 dBm, +/- 2dB
2 Mbps	-95 dBm, +/- 2dB
5.5 Mbps	-94 dBm, +/- 2dB
6 Mbps	-93 dBm, +/- 2dB
9 Mbps	-92 dBm, +/- 2dB
11 Mbps	-91 dBm, +/- 2dB
12 Mbps	-90 dBm, +/- 2dB
18 Mbps	-89 dBm, +/- 2dB
24 Mbps	-87 dBm, +/- 2dB
36 Mbps	-84 dBm, +/- 2dB
48 Mbps	-78 dBm, +/- 2dB
54 Mbps	-75 dBm, +/- 2dB



Ubiquiti Networks, Inc.  
778 N. First St., Ste. 202  
San Jose, CA 95112  
T (408)-385-1103  
F (408)-351-4973  
www.ubnt.com