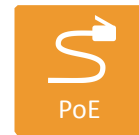




CLOUD



AC1200



PoE



EASY

## Product Overview

IgniteNet™'s SkyFire™ AC is the world's first outdoor dual-radio (dual-band concurrent) AP/CPE/PTP featuring the newest wireless and cloud technologies. The SkyFire™ AC contains 2 ultra-high powered 2x2 MIMO radios with one 802.11ac (5GHz) radio and one 802.11n (2.4GHz) radio capable of delivering blisteringly fast wireless speeds. The SkyFire™ AC is also available in single-band, single-radio versions to meet a variety of customer requirements and challenges.

## Key Features and Benefits

### Cloud-Enabled Networking

The IgniteNet™ SkyFire™ AC is cloud-enabled out of the box allowing for easy, highly scalable installation, configuration, and management.

### Dual Band AC1200 Operation

The SkyFire™ AC is capable of operating simultaneously at 2.4GHz (802.11b/g/n) as well as 5GHz (802.11a/n/ac) to supply ample throughput for the most demanding applications.

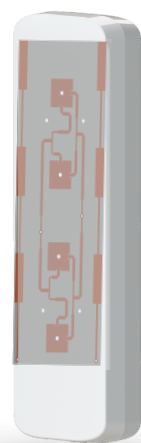
### Powerful, Flexible Configuration

The SkyFire™ AC can operate either as a stand-alone access point or as a coordinated, cloud-managed access point, easily meeting the requirements of any installation.

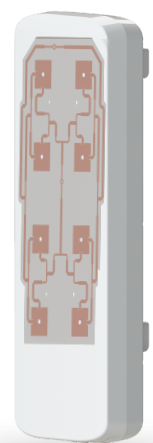
### Robust Weather-Resistant Design

The SkyFire™ AC features a hybrid metal/plastic design built to withstand the harshest environments including precipitation, hot/cold weather and high/low humidities.

## Product Variants



SF-AC1200



SF-AC866

### Features

#### HARDWARE FEATURES

- ✓ 1x Gigabit Ethernet Port (PoE IN)
- ✓ 1x 10/100 Fast Ethernet Ports
- ✓ 1x USB 2.0 Port (optional)
- ✓ Dual flash image support

#### LEDs

- ✓ Power, Ethernet, Wireless, Health/Status, Aiming

#### DIMENSIONS (L x W x H )

- ✓ 280 x 90 x 50 mm

#### WEIGHT

- ✓ TBD g

#### POWER

- ✓ 24V/1A passive Gigabit PoE

#### OPERATING ENVIRONMENT

- ✓ Operating Temperature: -40C° to +70C°
- ✓ Store Temperature: -40C° to 70C°
- ✓ Operating Humidity: 10 to 90% non-condensing (RH)

#### REGULATORY / STANDARDS COMPLIANCE

- ✓ FCC/IC
- ✓ CE

#### RF PERFORMANCE (TX)

- ✓ 2.4GHz:  
30dBm @ 6Mbps, 27dBm @ 300Mbps
- ✓ 5GHz:  
28dBm @ 6Mbps, 24dBm @ 866Mbps

#### RF PERFORMANCE (RX)

- ✓ 2.4GHz:  
TBD
- ✓ 5GHz:  
TBD

#### KEY FEATURES

- ✓ Supports Service Provider and Enterprise type networks
- ✓ Stand-alone or Cloud-controlled operating modes
- ✓ AP/Client/Client WDS modes with Flexible Bridging and Routing
- ✓ 802.11a/b/g/n/ac, 2x2, Dual Band Dual Concurrent ( 2.4GHz and 5GHz)
- ✓ Supports up to 8 SSIDs per radio
- ✓ Optional single band available
- ✓ IEEE802.e Wi-Fi Multimedia ( WMM-QoS)
- ✓ WEP (64/128-bit), WPA,WPA2-PSK,WPA2-AES, PSK and Enterprise
- ✓ Admission control by client MAC address

#### APPLICATIONS

- ✓ Fixed Wireless Access (broadband)
- ✓ 3G/4G Offload
- ✓ Managed WiFi Services

### Ordering Information

Part Number	Description
SF-AC1200-XX	Dualband Outdoor AP/CPE/PTP w/ integrated 18dBi 5GHz antenna + 2x RPSMA (2.4GHz)
SF-AC1200-1-XX	Dualband Outdoor AP/CPE/PTP w/ 2x RPSMA (5GHz) + 2x RPSMA (2.4GHz)
SF-AC1200-2-XX	Dualband Outdoor AP/CPE/PTP w/ integrated 7dBi 2.4GHz & 15dBi 5GHz antenna
SF-AC866-XX	5GHz Outdoor AP/CPE/PTP w/ integrated 18dBi 5GHz antenna
SF-AC866-1-XX	5GHz Outdoor AP/CPE/PTP w/ 2x RPSMA (5GHz)
SF-N300-XX	2.4GHz Outdoor AP/CPE/PTP with integrated 11dBi 2.4GHz antenna
SF-N300-1-XX	2.4GHz Outdoor AP/CPE/PTP w/ 2x RPSMA (2.4GHz)

**\*\*XX is used to denote localization (US, EU, AU, CN)**

### Contact



**Worldwide**  
20 Mason  
Irvine, CA 92618  
USA  
[sales@ignitenet.com](mailto:sales@ignitenet.com)

**Asia**  
No. 1 Creation Road III,  
Hsinchu Science Park,  
30077, Taiwan, R.O.C.  
[sales@ignitenet.com](mailto:sales@ignitenet.com)