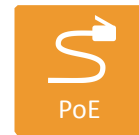




CLOUD



AC1200



PoE



EASY

Product Overview

IgniteNet™'s SkyFire™ AC is the world's first outdoor dual-radio (dual-band concurrent) AP/CPE/PTP featuring the newest wireless and cloud technologies. The SkyFire™ AC contains 2 ultra-high powered 2x2 MIMO radios with one 802.11ac (5GHz) radio and one 802.11n (2.4GHz) radio capable of delivering blisteringly fast wireless speeds. The SkyFire™ AC is also available in single-band, single-radio versions to meet a variety of customer requirements and challenges.

Key Features and Benefits

Cloud-Enabled Networking

The IgniteNet™ SkyFire™ AC is cloud-enabled out of the box allowing for easy, highly scalable installation, configuration, and management.

Dual Band AC1200 Operation

The SkyFire™ AC is capable of operating simultaneously at 2.4GHz (802.11b/g/n) as well as 5GHz (802.11a/n/ac) to supply ample throughput for the most demanding applications.

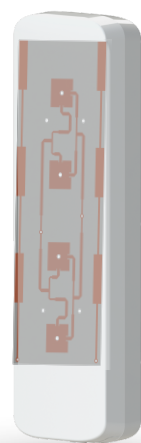
Powerful, Flexible Configuration

The SkyFire™ AC can operate either as a stand-alone access point or as a coordinated, cloud-managed access point, easily meeting the requirements of any installation.

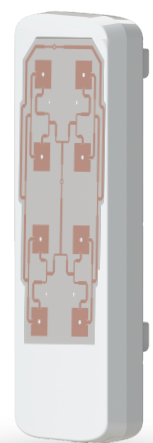
Robust Weather-Resistant Design

The SkyFire™ AC features a hybrid metal/plastic design built to withstand the harshest environments including precipitation, hot/cold weather and high/low humidities.

Product Variants



SF-AC1200



SF-AC866

Features

HARDWARE FEATURES

- ✓ 1x Gigabit Ethernet Port (PoE IN)
- ✓ 1x 10/100 Fast Ethernet Ports
- ✓ 1x USB 2.0 Port (optional)
- ✓ Dual flash image support

LEDs

- ✓ Power, Ethernet, Wireless, Health/Status, Aiming

DIMENSIONS (L x W x H)

- ✓ 280 x 90 x 50 mm

WEIGHT

- ✓ TBD g

POWER

- ✓ 24V/1A passive Gigabit PoE

OPERATING ENVIRONMENT

- ✓ Operating Temperature: -40C° to +70C°
- ✓ Store Temperature: -40C° to 70C°
- ✓ Operating Humidity: 10 to 90% non-condensing (RH)

REGULATORY / STANDARDS COMPLIANCE

- ✓ FCC/IC
- ✓ CE

RF PERFORMANCE (TX)

- ✓ 2.4GHz:
30dBm @ 6Mbps, 27dBm @ 300Mbps
- ✓ 5GHz:
28dBm @ 6Mbps, 24dBm @ 866Mbps

RF PERFORMANCE (RX)

- ✓ 2.4GHz:
TBD
- ✓ 5GHz:
TBD

KEY FEATURES

- ✓ Supports Service Provider and Enterprise type networks
- ✓ Stand-alone or Cloud-controlled operating modes
- ✓ AP/Client/Client WDS modes with Flexible Bridging and Routing
- ✓ 802.11a/b/g/n/ac, 2x2, Dual Band Dual Concurrent (2.4GHz and 5GHz)
- ✓ Supports up to 8 SSIDs per radio
- ✓ Optional single band available
- ✓ IEEE802.e Wi-Fi Multimedia (WMM-QoS)
- ✓ WEP (64/128-bit), WPA,WPA2-PSK,WPA2-AES, PSK and Enterprise
- ✓ Admission control by client MAC address

APPLICATIONS

- ✓ Fixed Wireless Access (broadband)
- ✓ 3G/4G Offload
- ✓ Managed WiFi Services

Ordering Information

Part Number	Description
SF-AC1200-XX	Dualband Outdoor AP/CPE/PTP w/ integrated 18dBi 5GHz antenna + 2x RPSMA (2.4GHz)
SF-AC1200-1-XX	Dualband Outdoor AP/CPE/PTP w/ 2x RPSMA (5GHz) + 2x RPSMA (2.4GHz)
SF-AC1200-2-XX	Dualband Outdoor AP/CPE/PTP w/ integrated 7dBi 2.4GHz & 15dBi 5GHz antenna
SF-AC866-XX	5GHz Outdoor AP/CPE/PTP w/ integrated 18dBi 5GHz antenna
SF-AC866-1-XX	5GHz Outdoor AP/CPE/PTP w/ 2x RPSMA (5GHz)
SF-N300-XX	2.4GHz Outdoor AP/CPE/PTP with integrated 11dBi 2.4GHz antenna
SF-N300-1-XX	2.4GHz Outdoor AP/CPE/PTP w/ 2x RPSMA (2.4GHz)

****XX is used to denote localization (US, EU, AU, CN)**

Contact



Worldwide
20 Mason
Irvine, CA 92618
USA
sales@ignitenet.com

Asia
No. 1 Creation Road III,
Hsinchu Science Park,
30077, Taiwan, R.O.C.
sales@ignitenet.com