

RV22 Wi-Fi 6 Home Mesh Router

With cnMaestro™ Response Center and Subscriber App

QUICKLOOK:

RV22

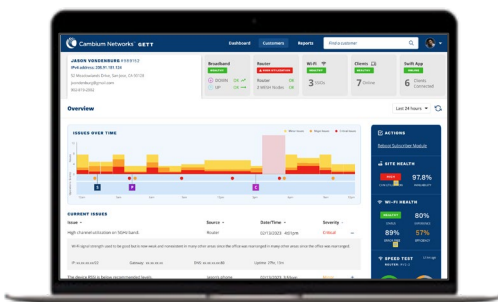
- 802.11a/b/g/n/ac, ax
- 5 GHz (3x3:2); 2.4 GHz (2x2:2)
- 4 x GbE RJ45 interface
- 12VDC, 2.5mm CP, P/S

Response Center

- Planned release June 2024
- cnMaestro cloud micro-service
- Integrated case tracking
- Context-aware Wi-Fi Insights
- Issue → Recommendation → Actions
- Wi-Fi scanner
- Single pane-of-glass management

Subscriber App

- Android or iOS
- Service provider branded
- Self-service at user's fingertips
- Family time
- Web content filter
- Speed test
- Optimize Wi-Fi
- Guest Wi-Fi



cnMaestro Response Center

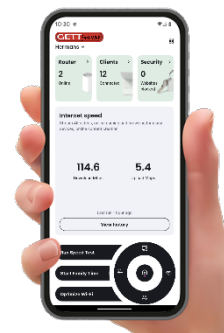
Response Center analytics deliver useful Insights and recommended actions to reduce the time to repair and eliminate truck rolls.

The intuitive cnMaestro subscriber workflow walks through the steps to set up a new subscriber and provision services. Use the same workflow tool to adjust managed broadband and Wi-Fi services.

Note: Response Center is not available at initial release.

Self-Service Subscriber App

Empower your subscribers to be part of their own service delivery with the easy-to-use self-service Subscriber App. Curated data is clearly displayed on the dashboard, while useful tools are obvious and intuitive.



RV22 Wi-Fi 6 Home Mesh Router

Licensing

The RV22 Wi-Fi 6 Home Mesh Router requires a device subscription. For additional flexibility, the RV22 device subscription can be added either to a cnMaestro Essentials account where other devices may be managed without a subscription or a cnMaestro account where other devices are managed with a cnMaestro X subscription.

cnMaestro Essentials:	RV22 Device Subscription Includes:
<p>Service providers that manage a network using cnMaestro Essentials can add the RV22 to the account along with the device subscription. They will not need to add subscriptions to all the other devices in the account.</p> <ul style="list-style-type: none"> • Offered at no cost to service providers • Scales up to 10,000 managed devices, while offering a single pane-of-glass management view of the entire network • Includes remote diagnostics, automatic RF management, zero-touch network service provisioning—all in a secure end-to-end managed broadband network 	<ul style="list-style-type: none"> • Claim the RV22 • Manage the AP with AP groups and device override • Subscriber workflow • Response Center help desk and analytics • Case management • Automatic RF management • Frequency coordination with FWA • Automatic mesh • Tech dump files, client connection statistics, client count, client SNR, AP and radio configuration monitor • Topology view of FWA, Fiber, Wi-Fi • Issue → Recommendation → Actions • CAF2 compliant speed test (future) • Subscriber App, web filter • 10,000 devices, 7 days' data store
cnMaestro X:	RV22 Device Subscription Includes:
<p>cnMaestro X is a paid subscription service that provides advanced features for enterprise APs, switches, and FWA products. All devices managed within an X account require a subscription.</p> <ul style="list-style-type: none"> • Includes Cambium Care Pro 24x7 technical support, L2 and L3 support engineers, and upgrades for advanced features 	<p>Includes all of the above, plus:</p> <ul style="list-style-type: none"> • RESTful API, webhooks, reports • 24x7 customer support, L1–L3 • 20,000 devices, 1 year data store

RV22 Wi-Fi 6 Home Mesh Router

Primary specifications subject to change at product release.

Standards

802.11ax, up to 3x3:2. 20/40/80/160 MHz, 802.11a/b/g/n/ac wave 2, MU-OFDMA, MU-MIMO, TWT, MIMO, VHT MCS rates, 16/64/256/1024/4096-QAM, Transmit Beam steering, Airtime Fairness, AMSDU, AMPDU, RIFS, STBC, LDPC, MIMO Power Save, MRC, BPSK, QPSK, CCK, DSSS, OFDM. IEEE 802.11d/e/h/i/k/r/u/v/w

Access Point Specifications

FCC	Ch 1–11, 36–64, 100–144, 149–165	Antenna Type	Internal, vertically polarized
ISED	Ch 1–11, 36–64, 100–116, 149–165		
ETSI	Ch 1–13, 36–64, 100–140, 149-165		
ROW*	Ch 1–14, 36–64, 100–144, 149–173 <i>*Individual country limits may apply</i>		
Radios	5 GHz: 802.11a/n/ac/ax, 3x3:2 2.4 GHz: 802.11 b/g/n/ax, 2x2:2	Antenna Gain	5 GHz: up to 5 dBi 5 GHz TxBF gain (max): 4.77 dBi 2.4 GHz: up to 5 dBi 2.4 GHz TxBF gain (max): 3 dBi
MAX PHY Rate	5 GHz radio: 2.4 Gbps 2.4 GHz radio: 600 Mbps	Conducted Tx Power	5 GHz 3x3:2 radio: 25.7 dBm 2.4 GHz 2x2:2 radio: 24 dBm
Ports	4 x IEEE 10/100/1000 Mbps Ethernet	Power	12VDC, 1.2A DC power jack 2.5mm x 5.5mm CP
		Physical Environmental	100mm x 100mm x 175mm, 400g Multicolor status LED 0C - +40C ambient op temp 0C - +70C storage temperature 10% to 90% RH non-condensing
		Certifications	FCC,CE, AU, NZ,UK

WLAN and Network Specifications

Licensing	Requires an RV22 device subscription for use in a cnMaestro Essentials or cnMaestro X account	Router-to-Internet Speed Test	Automatically runs after the subscriber tests App-to-internet speed. Manual test can be initiated in Response Center. Scheduled tests configured in the Subscriber workflow.
WLAN Security	64 clients, 2 SSIDs Open, WPA2 PSK, 802.11w PMF	CAF2-Compliant Speed Test	Subscriber random selection, tests and report for CAF2-compliant network tests (not available at first release).
Mesh	Automatic discovery and setup. Continuous mesh quality monitor with LED indicator.	App-to-Internet Speed Test	Initiated from the dashboard tool on the Subscriber App. Test history is shown in the App and detailed data reported in the Response Center.
Mesh Modes	Mesh star, mesh linear, or wired mesh. Not compatible with Cambium enterprise Wi-Fi APs.	Subscriber App Tools	Web content filter Family time Speed test Optimize Wi-Fi Guest Wi-Fi Manage multiple sites Invite family members to manage Dashboard view of network, devices, and security events
RF Management	Auto-RF with auto-channel selection and frequency coordination with FWA subscriber module. RF monitor with chn utilization/noise/RF interference/errors.	DNS Filter	Auto, manual, and proxy (default mode). DOH will be blocked; DNS over UDP will be used.
Network	NAT logging firewall/router, DHCP/DNS server		
Band Steering	Yes		
Subscriber QoS	WMM		
Fast Roaming	802.11r		

RV22 Wi-Fi 6 Home Mesh Router

Ordering Information

Regulatory Model	RV22
RV22XXA00-RW	RV22 Wi-Fi 6 Home MESH Router/ Node, 5 GHz 3x3:2, 2.4 GHz 2x2:2 dual band, 4 x GbE. no P/S, no line cord. ROW
RV22USA00-RW	RV22 Wi-Fi 6 Home MESH Router/ Node, 5 GHz 3x3:2, 2.4 GHz 2x2:2 dual band, 4 x GbE. 12V1.5A, US Type B P/S. ROW
RV22USA00-CA	RV22 Wi-Fi 6 Home MESH Router/ Node, 5 GHz 3x3:2, 2.4 GHz 2x2:2 dual band, 4 x GbE. 12V1.5A, US Type B P/S. CA
RV22USA00-US	RV22 Wi-Fi 6 Home MESH Router/ Node, 5 GHz 3x3:2, 2.4 GHz 2x2:2 dual band, 4 x GbE. 12V1.5A, US Type B P/S. US
RV22USAB2-US	RV22 qty 2, Wi-Fi 6 Home MESH Router/ Node, 5 GHz 3x3:2, 2.4 GHz 2x2:2 dual band, 4 x GbE. 12V1.5A, US Type B P/S. US two pack
RV22EUA00-RW	RV22 Wi-Fi 6 Home MESH Router/ Node, 5 GHz 3x3:2, 2.4 GHz 2x2:2 dual band, 4 x GbE. 12V1.5A, EU Type C P/S. ROW
RV22EUA00-EU	RV22 Wi-Fi 6 Home MESH Router/ Node, 5 GHz 3x3:2, 2.4 GHz 2x2:2 dual band, 4 x GbE. 12V1.5A, EU Type C P/S. EU
RV22ANA00-RW	RV22 Wi-Fi 6 Home MESH Router/ Node, 5 GHz 3x3:2, 2.4 GHz 2x2:2 dual band, 4 x GbE. 12V1.5A, AU Type I P/S. AU/NZ
RV22ARA00-RW	RV22 Wi-Fi 6 Home MESH Router/ Node, 5 GHz 3x3:2, 2.4 GHz 2x2:2 dual band, 4 x GbE. 12V1.5A, AR Type I P/S. AR
RV22INA00-RW	RV22 Wi-Fi 6 Home MESH Router/ Node, 5 GHz 3x3:2, 2.4 GHz 2x2:2 dual band, 4 x GbE. 12V1.5A, IN Type D P/S. ROW
RV22NTA00-RW	RV22 Wi-Fi 6 Home MESH Router/ Node, 5 GHz 3x3:2, 2.4 GHz 2x2:2 dual band, 4 x GbE. 12V1.5A, NT Type N P/S. ROW
RV22UKA00-RW	RV22 Wi-Fi 6 Home MESH Router/ Node, 5 GHz 3x3:2, 2.4 GHz 2x2:2 dual band, 4 x GbE. 12V1.5A, UK Type G P/S. UK/ROW
RV22ZAA00-RW	RV22 Wi-Fi 6 Home MESH Router/ Node, 5 GHz 3x3:2, 2.4 GHz 2x2:2 dual band, 4 x GbE. 12V1.5A, ZA Type M P/S. ROW
AX-12VDC1.5A-A	12VDC 1.5A PS wall Plug with US type A
AX-12VDC1.5A-G	12VDC 1.5A PS wall Plug with UK type G
AX-12VDC1.5A-C	12VDC 1.5A PS wall Plug with EU type C
AX-12VDC1.5A-D	12VDC 1.5A PS wall Plug with India type D
AX-12VDC1.5A-I	12VDC 1.5A PS wall Plug with Australia/New Zealand Type I

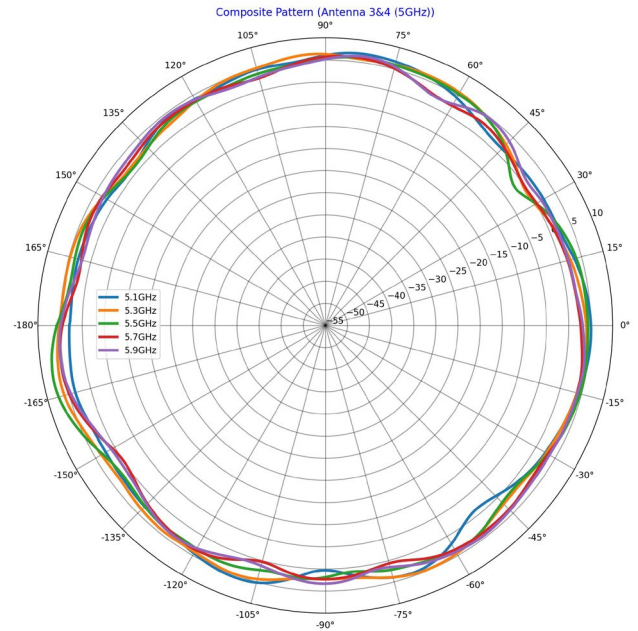
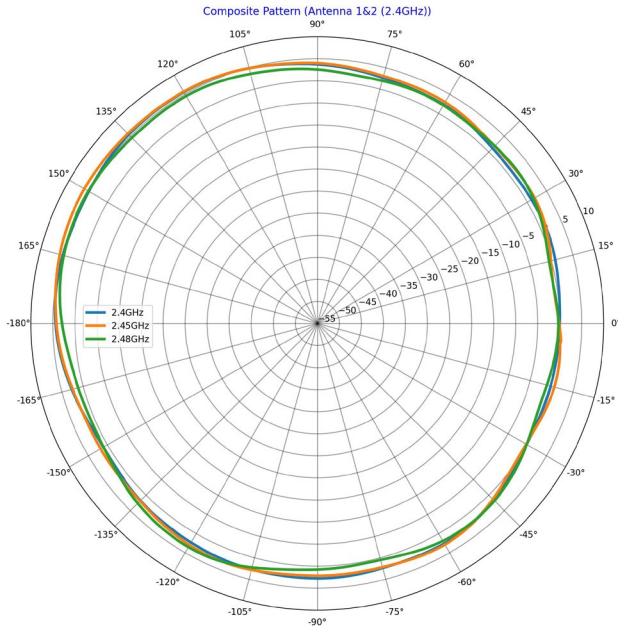
cnMaestro Device Subscription

MSX-SUB-RV22-1	cnMaestro Device Subscription for RV22. cnMaestro NMS, Subscriber App, Response Center, Speedtest, 7x24 support. Apply to cnMaestro Essentials account or cnMaestro X account. One device for one (1) year
MSX-SUB-RV22-3	cnMaestro Device Subscription for RV22. cnMaestro NMS, Subscriber App, Response Center, Speedtest, 7x24 support. Apply to cnMaestro Essentials account or cnMaestro X account. One device for three (3) year
MSX-SUB-RV22-5	cnMaestro Device Subscription for RV22. cnMaestro NMS, Subscriber App, Response Center, Speedtest, 7x24 support. Apply to cnMaestro Essentials account or cnMaestro X account. One device for five (5) year

Hardware Warranty

Cambium Networks RV22 includes a one-year hardware warranty from time of sale.

RV22 Wi-Fi 6 Home Mesh Router



100mm x 100mm x 175mm



ABOUT CAMBIUM NETWORKS

Cambium Networks empowers millions of people with wireless connectivity worldwide. Its wireless portfolio is used by commercial and government network operators as well as broadband service providers to connect people, places, and things. With a single network architecture spanning fixed wireless and Wi-Fi, Cambium Networks enables operators to achieve maximum performance with minimal spectrum. End-to-end cloud management transforms networks into dynamic environments that evolve to meet changing needs with minimal physical human intervention. Cambium Networks empowers a growing ecosystem of partners who design and deliver gigabit wireless solutions that just work.