




# Power Station 2

## Datasheet

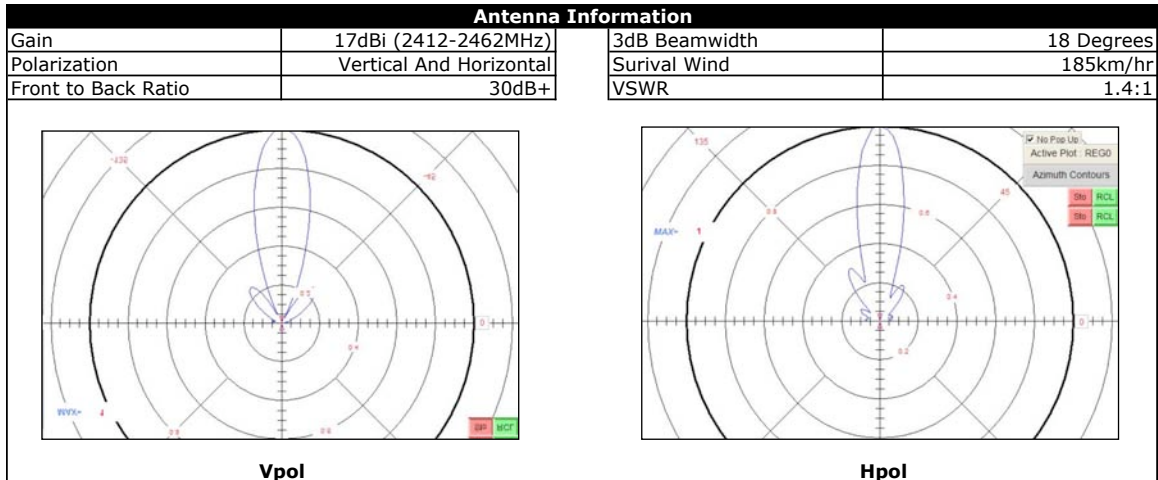
SYSTEM INFORMATION			
Processor Specs	Atheros AR2316 SOC, MIPS 4KC, 180MHz		
Memory Information	16MB SDRAM, 4MB Flash		
Networking Interface	2 X 10/100 BASE-TX (Cat. 5, RJ-45) Ethernet Interface		
REGULATORY / COMPLIANCE INFORMATION			
Wireless Approvals	FCC Part 15.247, IC RS210		
RoHS Compliance	YES		
RADIO OPERATING FREQUENCY 2412-2462 MHz			
TX SPECIFICATIONS		RX SPECIFICATIONS	
	DataRate	TX Power	Tolerance
802.11b	1Mbps	26 dBm	+/-1dB
	2Mbps	26 dBm	+/-1dB
	5.5Mbps	26 dBm	+/-1dB
	11Mbps	26 dBm	+/-1dB
802.11g OFDM	6Mbps	26 dBm	+/-1dB
	9Mbps	26 dBm	+/-1dB
	12Mbps	26 dBm	+/-1dB
	18Mbps	26 dBm	+/-1dB
	24Mbps	26 dBm	+/-1dB
	36Mbps	24 dBm	+/-1dB
	48Mbps	23 dBm	+/-1dB
	54Mbps	22 dBm	+/-1dB
	DataRate	Sensitivity	Tolerance
802.11b	1Mbps	-97 dBm	+/-1dB
	2Mbps	-96 dBm	+/-1dB
	5.5Mbps	-95 dBm	+/-1dB
	11Mbps	-92 dBm	+/-1dB
802.11g OFDM	6Mbps	-94 dBm	+/-1dB
	9Mbps	-93 dBm	+/-1dB
	12Mbps	-91 dBm	+/-1dB
	18Mbps	-90 dBm	+/-1dB
	24Mbps	-86 dBm	+/-1dB
	36Mbps	-83 dBm	+/-1dB
	48Mbps	-77 dBm	+/-1dB
	54Mbps	-74 dBm	+/-1dB
ADJUSTABLE CHANNEL SIZE SUPPORT			
5MHz	10MHz	20MHz	40MHz
RANGE PERFORMANCE			
Outdoor (BaseStation Antenna Dependent):			Over 50km
PHYSICAL / ELECTRICAL / ENVIRONMENTAL			
Enclosure Size	18 in. length x 13 in. height x 2in. Width		
Weight	8.8 lbs		
Enclosure Characteristics	Outdoor UV Stabilized Plastic (Antenna) and die cast metal (system)		
Mounting Kit	Pole / Wall Mounting Kit included		
Max Power Consumption	6.5 Watts		
Power Supply	12V, 1A (12 Watts). Supply and injector included		
Power Method	Passive Power over Ethernet (pairs 4,5+; 7,8 return)		
Operating Temperature	-40C to 85C (System PCB optimized for hi-temp)		
Operating Humidity	5 to 95% Condensing		
Shock and Vibration	ETSI300-019-1.4		
SOFTWARE (www.ubnt.com/airos)			
			

# MODEL NUMBERS



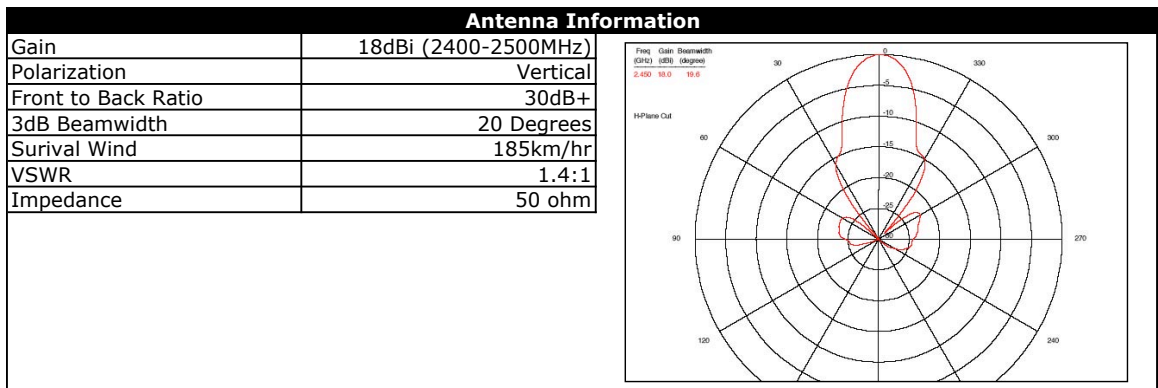
## PS2-17D

Integrated 17dBi Dual Polarity Panel Antenna



## PS2-18V

Integrated 18dBi Vertical Polarity Panel Antenna



## PS2-EXT

(2) N-Type External Connectors for External Sector/Omni/Dish Applications