

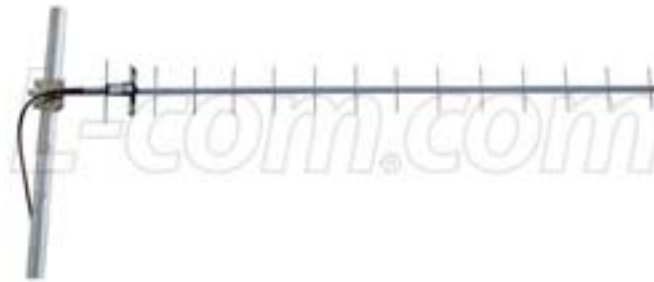
## HyperLink Wireless brand 900 MHz 13 dBi Yagi Antennas for ISM, GSM and Wireless LAN Systems

Model:  
HG913Y

### Applications and Features

---

<b>Applications:</b>	<ul style="list-style-type: none"><li>▪ 900MHz ISM Band</li><li>▪ Wireless LAN systems</li><li>▪ Point to multipoint applications</li><li>▪ Non Line of Sight (NLOS)</li><li>▪ GSM</li><li>▪ RFID</li><li>▪ SCADA</li><li>▪ Wireless Video Links</li><li>▪ 900MHz Cellular</li></ul>	<b>Features:</b>	<ul style="list-style-type: none"><li>▪ Superior performance</li><li>▪ Heavy duty steel construction</li><li>▪ All weather operation</li><li>▪ Heavy-duty 1/2" stainless steel boom</li><li>▪ Solid 1/8" elements</li><li>▪ 18 inch coax lead</li><li>▪ Can be installed for either vertical or horizontal polarization</li><li>▪ 1/8" thick plated steel mounting plate</li><li>▪ RoHS Compliant</li></ul>
----------------------	--	------------------	---



### Product Description

---

#### Superior Performance

The HyperGain® HG9013Y High-Performance Yagi Antennas combines high gain with a wide beam-width. They are ideally suited for directional applications in the 900MHz ISM and GSM bands. Typical applications include 900MHz Wireless LAN, SCADA, Wireless Video Links, 900 MHz Cellular, Non Line of Sight (NLOS) applications and point to multi-point systems. External interference of this antenna is minimized due to the excellent front to back ratio. These antennas comes with a 18" coax lead terminated with an N-Female connector. It can be installed for either vertical or horizontal polarization

#### Rugged and Weatherproof

This antenna features a heavy-duty 1/2" stainless steel boom and solid 1/8" elements. Secure mounting is assured by a 1/8" thick plated steel mounting plate and two plated steel U-bolts.

**Specifications**

<b>Model</b>	HG913Y
<b>Frequency</b>	890-960 MHz
<b>Gain</b>	13 dBi
<b>Polarization</b>	Horizontal or Vertical
<b>Horizontal Beam Width</b>	30°
<b>Vertical Beam Width</b>	30°
<b>Front to Back Ratio</b>	18 dB
<b>Impedance</b>	50 Ohm
<b>Max. Input Power</b>	100 Watts
<b>VSWR</b>	< 1.5:1 avg.
<b>Elements</b>	15
<b>Weight</b>	2.7 lbs. (1.25 kg)
<b>Length</b>	57 in. (1.45 m)
<b>Mounting</b>	2 in. (50.8 mm) diameter mast max.
<b>Operating Temperature</b>	-40° C to to 85° C (-40° F to 185° F)
<b>Lightning Protection</b>	DC Short
<b>Connector</b>	N-Female
<b>Wind Survival</b>	135 MPH
<b>RoHS Compliant</b>	Yes

**Wind Loading Data**

<b>Wind Speed (MPH)</b>	<b>Loading</b>
100	11.5 lb.
120	18.2 lb.
100 w/1/2" Radial Ice	21 lb.

**RF Antenna Gain Patterns**

