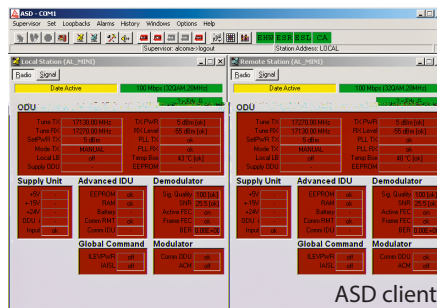
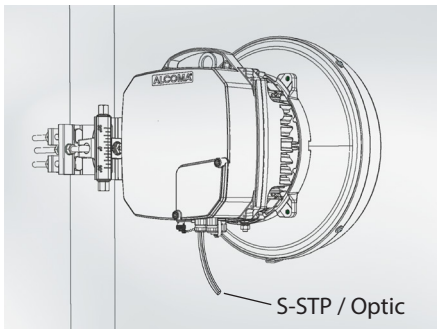


ZENITH SERIES Microwave Radios

Unlicensed 24 GHz / 80 GHz



Alcoma is a leading European radio manufacturer of point-to-point microwave links. The company's history dates back to 1993 and continues to provide the microwave industry with innovative radio solutions designed for carriers, WISP operators, enterprise, government / military, oil & gas exploration, and other demanding wireless applications.

ALCOMA's Zenith Series microwave radios operate in the licensed 11 GHz and unlicensed 24 GHz and 80 GHz bands, offering a combination of high capacity and carrier-grade reliability in an unlicensed easy to deploy outdoor platform. The radios are engineered and manufactured in Alcoma's state of the art production facility. Alcoma's design and production processes are ISO 9001:2008 certified, guaranteeing the highest quality and commitment to excellence. Alcoma re-invests significant capital to meet its goal of delivering the most advanced features and **the right choice for building next generation networks.**

Key features

- ▲ Configurations: 1+0, 2+0, 1+1 Protected
- ▲ Capacity Aggregation with X-PIC
- ▲ Software Configurable
- ▲ Interference Rejection Management
- ▲ Selectable Channel Bandwidth Options
- ▲ Up to 3 Gigabit Ethernet Interfaces
- ▲ Optical (SM/MM) and Electrical Interfaces Available
- ▲ Jumbo Packets up to 10,240 B
- ▲ Security – Optional 128-bit and 256-bit AES Encryption – meets FIPS-197
- ▲ Automatic Tx Power Control (ATPC)
- ▲ Hitless Adaptive Modulation and Coding – Forward Error Correction
- ▲ In-Band and Out-of-Band Management and Diagnostics
- ▲ PoE Single Cable Option
- ▲ Redundant Power Feed Option
- ▲ Full Overvoltage Protection



Industry
Canada

Industrie
Canada



ISO 9001

ZENITH SERIES Microwave Radios

General	ZENITH 11	ZENITH 24	ZENITH 80
Operating frequency range (GHz)	10.7 – 11.7	24.05 – 24.25	71 – 76 / 81 – 86
Channel Width (MHz)	10 / 14 / 20 / 28 / 30 / 40 / 56 / 60 / 80 / 112		1,250
Max. User Data Capacity	920 Mbps full duplex in 112 MHz channel		1,150 Mbps FD
Modulation	4QAM – 1024QAM		DBPSK
Forward Error Correction	Reed-Solomon error correction		
System configuration	1+0, 1+1		
Radio			
Tx power max. (dBm)	23	0	20
Frequency stability	<±10 ppm		
ATPC	Yes		
Interfaces			
LINE 2	1000Base-T / 100Base-TX		
LINE 3	1000Base-T / 100Base-TX		
LINE 4	1000Base-SX / 1000Base-LX		
Management			
In-band and out-of-band, NMS can be assigned to LINE 2, 3, 4			
RS-232 for direct connection to the unit			
RS-485 supervisory channel between units			
Power supply			
36 – 72 V DC / 25 W standard (35 W high power)		36 – 72 V DC / 40 W	
Cable			
S-STP or S-FTP cat. 7 connected to the KRONE punch block			
Temperature Range			
Operating		–33 °C to +55 °C (–27 °F to +131 °F)	



ALCOMA



Made in EU

ALCOMA a.s.
 Vinšova 11 | 106 00 Praha 10
 Czech Republic
www.alcoma.com