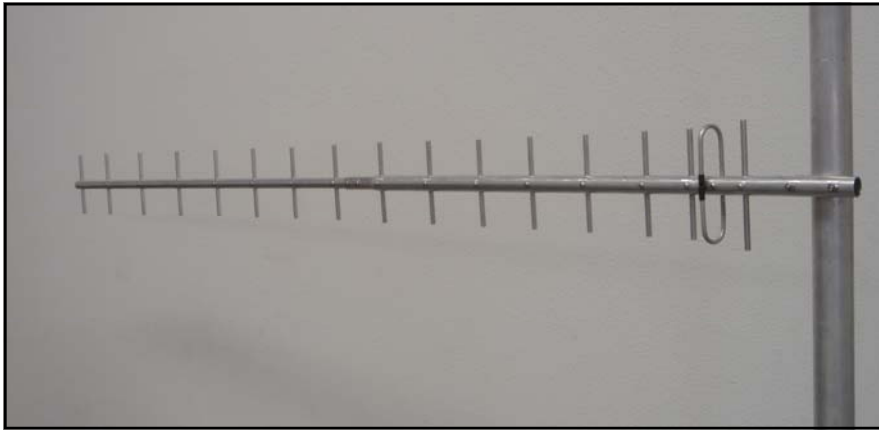




917A-ISP YAGI (900-930MHz)

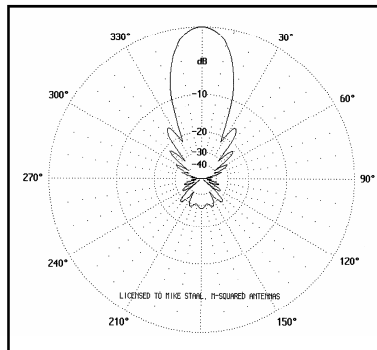
8.9.07



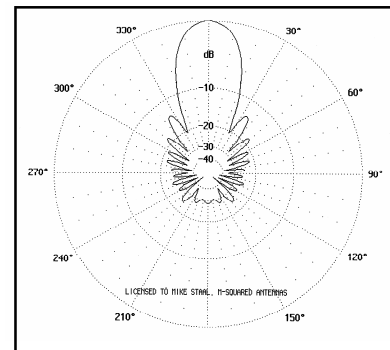
SPECIFICATIONS

MODEL917A-ISP
 FREQUENCY RANGE.....900-930 MHz
 USABLE RANGE880-940 MHz
 GAIN17 dBi
 FRONT TO BACK.....25 dB
 VSWR.....1.2:1 TYPICAL
 BEAM WIDTH.....H= 22° / E= 20°
 POLARITY.....VERT / HORZ
 STACKING DISTANCE28"
 FEED IMPEDANCE50 OHMS
 FEED CONNECTORN-FEMALE
 POWER HANDLING.....500 WATTS
 BOOM LENGTH74"
 BOOM DIA.....1" TO 3/4"
 MAST SIZE1 1/4" TO 2"
 WIND AREA(.4) SQ FT.
 WIND RATING.....100 MPH
 WEIGHT.....4 LBS.

917-ISP E-PLANE



917-ISP H-PLANE



FEATURES

The **917A-ISP** Wireless internet antenna, is designed for deep fringe systems where standard panels or smaller yagi's just don't cut it. The antenna enables "Polarity Flexibility" in any given application. Low cost configured with dependability allows use even in strong signal areas for greater margin, which means less service calls. **The new 5/16" element design decreases the effects of rain and light snow deterioration often seen in similar antennas.**

The heart of the **917A-ISP**, the folded dipole, provides a virtual flat match for over 30 MHz. The gain has been designed to roll-off quickly above range limits to prevent receiver overload from high power services above 930 MHz. The heavy duty two piece boom and 5/16" elements, give the ISP service confidence for superior performance and longevity.

The **917A-ISP** is a DC grounded antenna designed to work with many radios including the Wave Rider. The 3003 and 3004 Wave Rider radios have internal DC circuit protection built in. The 3000 model will work with the 917-ISP, but will default to the outside antenna once it sees a short.

4402 N. Selland Ave, Fresno, CA 93722 (559) 432-8873 FAX: 432-3059

www.m2inc.com Email: wyatt@m2inc.com

917A-ISP (HI-PERFORMANCE 900-930 MHZ YAGI) DIMENSION SHEET

REAR

ELEMENT
SPACING

ELEMENT
LENGTH

0.00		6.750
1.580		5.875
3.160		5.750
5.984		5.750
9.933		5.532
13.948		5.464
17.962		5.330
22.190		5.330
26.609		5.330
31.089		5.125
35.608		5.062
40.067		5.062
44.716		5.062
49.828		5.062
59.130		5.062
60.316		5.062
64.616		5.062

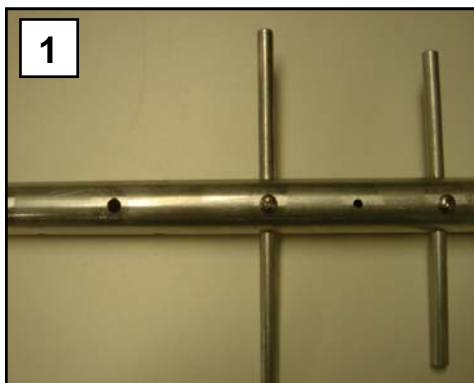
DECIMAL TO FRACTION CONVERSION

.062 = 1/16
 .125 = 1/8
 .188 = 3/16
 .250 = 1/4
 .313 = 5/16
 .375 = 3/8
 .437 = 7/16
 .500 = 1/2
 .562 = 9/16
 .625 = 5/8
 .688 = 11/16
 .750 = 3/4
 .813 = 13/16
 .875 = 7/8
 .937 = 15/16

FRONT

GETTING STARTED

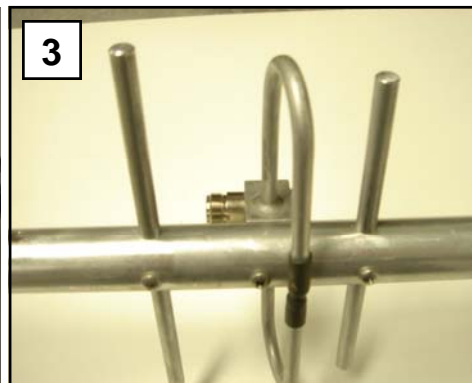
Tools handy for assembly process: Phillips head screwdriver, 11/32" spin-tite or socket, 7/16" end wrench or socket. The elements of the antenna are pre-assembled from the factory.

**Step 1:**

Start with the rear boom section (1" x 36") assembly.

**Step 2:**

Attach the folded dipole to the rear boom section by sliding the unit back and forth until it is in place.

**Step 3:**

Attach the driven dipole with a single 8-32 x 1 1/4" screw.

**Step 4:**

Attach the rear boom section to the front boom section using the supplied 8-32 x 1 1/4" screws and nylock nuts.

**Step 5:**

Attach the mounting U-bolt and Cradle in the correct polarity holes. Use the two 1/4-20 hex nuts and lock washers. It is highly recommended to use a lubricant like WD-40 on the threads of the U-bolt. Stainless material will seize if not lubricated.

917A-ISP PARTS LIST

11.23.05

DESCRIPTION	QTY
BOOM, 1.0" X .058 X 36.00 SOE TO FIT 3/4..	1
BOOM, 3/4" X .049 X 37.75 ALUM.....	1
ELEMENTS, 5/16" (INSTALLED)	16
FOLDED DIPOLE ASSEMBLY	1
U-BOLT, 2", SS & UNI-SADDLE	1
ASSEMBLY MANUAL	1

IN HARDWARE BAGS:

NUT, 1/4-20, SS	2
LOCKWASHER, 1/4" SPLIT RING SS	2
SCREW, 8-32 X 1-1/4", SS	3
LOCKNUT, 8-32, SS	2

M² ANTENNA SYSTEMS, INC.

4402 N. SELLAND AVE.

FRESNO, CA 93722

(559) 432-8873 FAX: 432-3059

www.m2inc.com Email: sales@m2inc.com