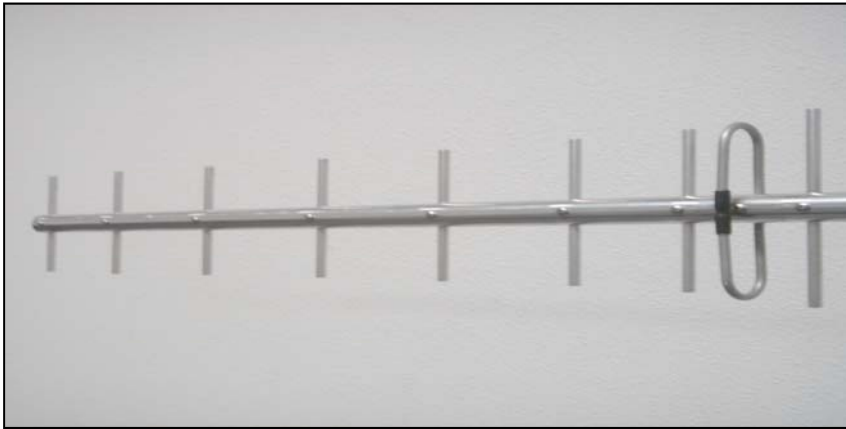




914A-ISP YAGI (900-930MHz)

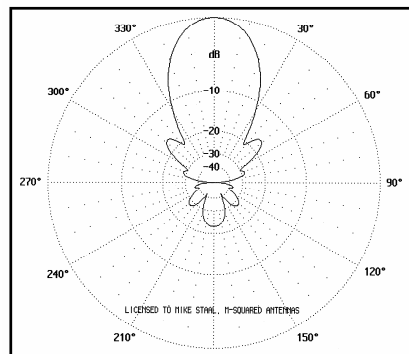
12-6-05
Rev 3-8-07



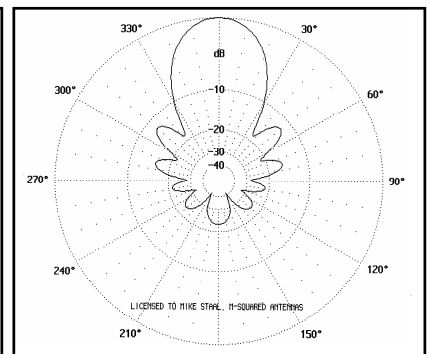
SPECIFICATIONS

MODEL..... 914A-ISP
 FREQUENCY RANGE 900-930 MHz
 USABLE RANGE..... 880-940 MHz
 GAIN..... 14.25 dBi
 FRONT TO BACK..... 25 dB
 VSWR..... 1.2:1 TYPICAL
 BEAM WIDTH..... H= 32° / E= 30°
 POLARITY..... VERT / HORZ
 STACKING DISTANCE 28"
 FEED IMPEDANCE..... 50 OHMS
 FEED CONNECTOR N-FEMALE
 POWER HANDLING..... 500 WATTS
 BOOM LENGTH 36"
 BOOM DIA..... 1"
 MAST SIZE..... 1 1/4" TO 2"
 WIND AREA (.4) SQ FT.
 WIND RATING..... 100 MPH
 WEIGHT..... 3 LBS.

914A-ISP E-PLANE



914A-ISP H-PLANE



FEATURES

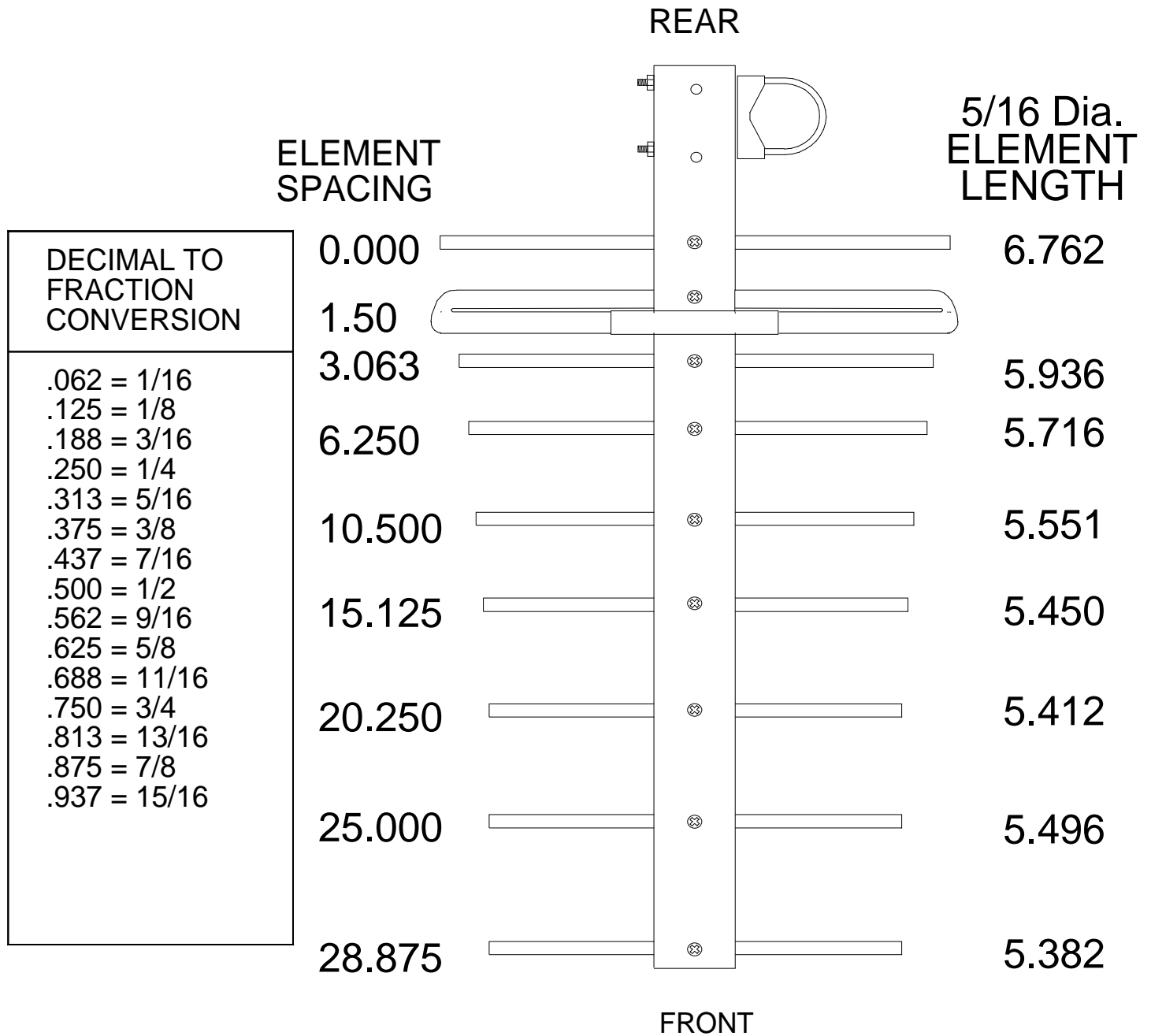
The **914A-ISP** Wireless internet antenna, has been designed to give you optimum performance for the smallest package size. **The new 5/16" element design decreases the effects of rain and light snow deterioration often seen in similar antennas.**

The heart of the **914A-ISP**, the folded dipole, provides a virtual flat match for over 30 MHz. The gain has been designed to roll-off quickly above range limits to prevent receiver overload from high power services above 930 MHz. The heavy duty two piece boom and 5/16" elements, give the ISP service confidence for superior performance and longevity.

The **914A-ISP** is a DC grounded antenna designed to work with many radios including the Wave Rider. The 3003 and 3004 Wave Rider radios have internal DC circuit protection built in. The 3000 model will work with the 917-ISP, but will default to the outside antenna once it sees a short.

Call about special bulk pricing !

914A-ISP (HI-PERFORMANCE 900-930 MHZ YAGI) DIMENSION SHEET



914AISPDIW
W.LYZENG/
12-07-05

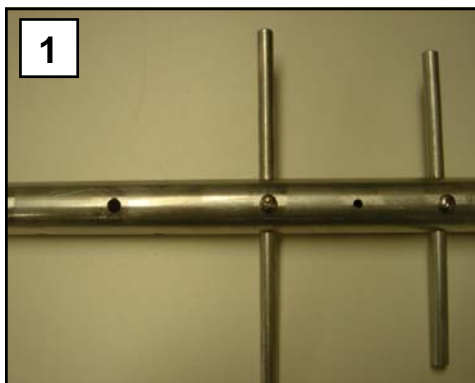


914A-ISP MANUAL

12-6-05
Rev 9.06.07

GETTING STARTED

Tools handy for assembly process: Phillips head screwdriver, 11/32" spin-tite or socket, 7/16" end wrench or socket. The elements of the antenna are pre-assembled from the factory.



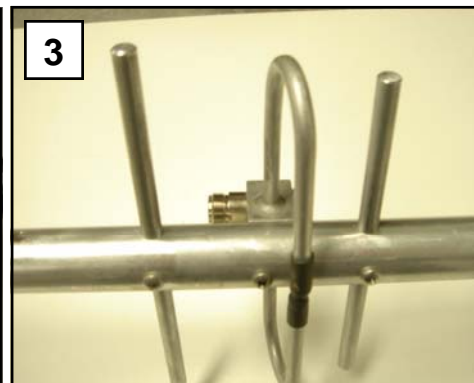
Step 1:

The assembly will be started at the rear of the boom section.



Step 2:

Attach the folded dipole to the rear boom section by sliding the unit back and forth until it is in place.



Step 3:

Attach the driven dipole with a single 8-32 x 1 1/4" screw.



Step 5:

Attach the mounting U-bolt and Cradle in the correct polarity holes. Use the two 1/4-20 hex nuts and lock washers. **It is highly recommended to use a lubricant like WD-40 on the threads of the U-bolt. Stainless material will seize if not lubricated.**

914A-ISP PARTS LIST

12-06-05

DESCRIPTION	QTY
BOOM, 1.0" X .058 X 36.00 ALUM.....	1
ELEMENTS, 5/16" (INSTALLED)	8
FOLDED DIPOLE ASSEMBLY	1
U-BOLT, 2", SS & UNI-SADDLE	1
ASSEMBLY MANUAL	1

IN HARDWARE BAGS:

NUT, 1/4-20, SS	2
LOCKWASHER, 1/4" SPLIT RING SS	2
SCREW, 8-32 X 1-1/4", SS	1

M² ANTENNA SYSTEMS, INC.

4402 N. SELLAND AVE.

FRESNO, CA 93722

(559) 432-8873 FAX: 432-3059

www.m2inc.com Email: sales@m2inc.com