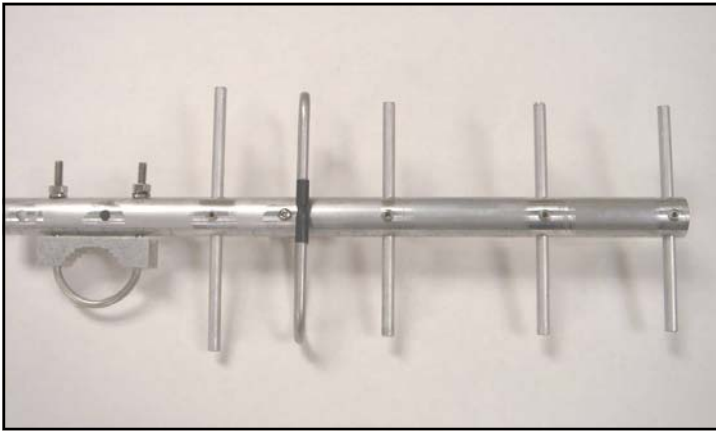




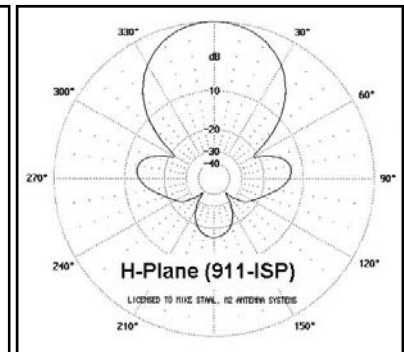
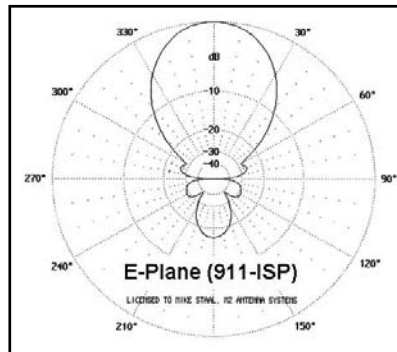
# 911-ISP YAGI (900-930MHz)

3-08-07



## SPECIFICATIONS

MODEL.....911-ISP  
 FREQUENCY RANGE ..... 900-930 MHz  
 USABLE RANGE..... 890-940 MHz  
 GAIN..... 11dBi  
 FRONT TO BACK..... 17 dB  
 VSWR..... 1.3:1 TYPICAL  
 BEAM WIDTH..... H= 52° / E=44°  
 POLARITY..... VERT / HORZ  
 STACKING DISTANCE ..... 28"  
 FEED IMPEDANCE ..... 50 OHMS  
 FEED CONNECTOR ..... N-FEMALE  
 POWER HANDLING..... 500 WATTS  
 BOOM LENGTH..... 17 1/2"  
 BOOM DIA..... 1"  
 MAST SIZE..... 1 1/4" TO 2"  
 WIND AREA ..... (.1) SQ FT.  
 WIND RATING..... 100 MPH  
 WEIGHT..... 1 LB



## FEATURES

The **911-ISP** Wireless internet antenna, has been designed to give you optimum performance for the smallest package size. **The new 5/16" element design decreases the effects of rain and light snow deterioration often seen in similar antennas.**

The heart of the **911-ISP**, the folded dipole, provides a virtual flat match for over 30 MHz. The gain has been designed to roll-off quickly above range limits to prevent receiver overload from high power services above 930 MHz. The heavy duty boom and 5/16" elements, give the ISP service confidence for superior performance and longevity.

The **911-ISP** is a DC grounded antenna designed to work with many radios including the Wave Rider. The 3003 and 3004 Wave Rider radios have internal DC circuit protection built in.

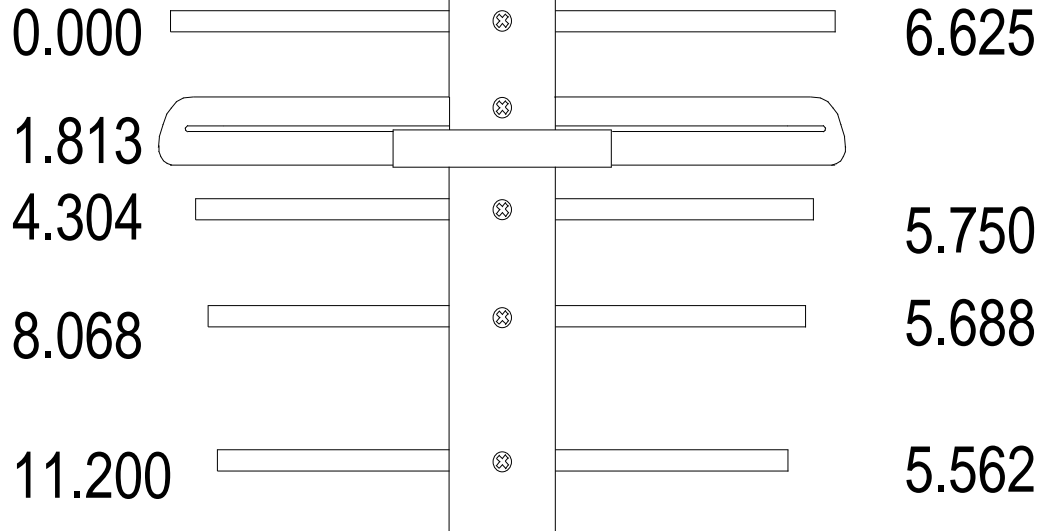
**Call about special bulk pricing !**

# 911-ISP (HI-PERFORMANCE 900-930 MHZ YAGI) DIMENSION SHEET

REAR

ELEMENT  
SPACING

DECIMAL TO FRACTION CONVERSION
.062 = 1/16
.125 = 1/8
.188 = 3/16
.250 = 1/4
.313 = 5/16
.375 = 3/8
.437 = 7/16
.500 = 1/2
.562 = 9/16
.625 = 5/8
.688 = 11/16
.750 = 3/4
.813 = 13/16
.875 = 7/8
.937 = 15/16

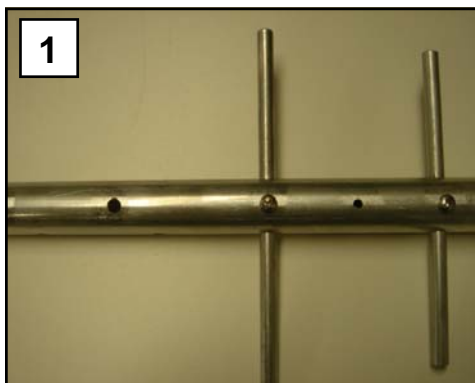


FRONT



## GETTING STARTED

Tools handy for assembly process: Phillips head screwdriver, 11/32" spin-tite or socket, 7/16" end wrench or socket. The elements of the antenna are pre-assembled from the factory.



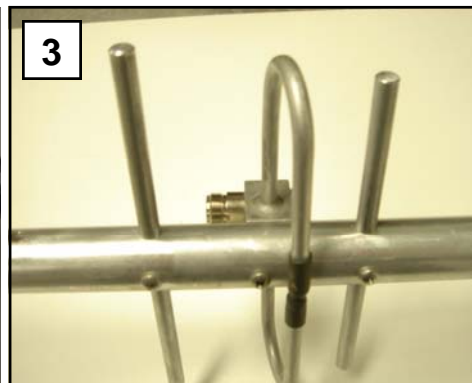
**Step 1:**

The assembly will be started at the rear of the boom section.



**Step 2:**

Attach the folded dipole to the rear boom section by sliding the unit back and forth until it is in place.



**Step 3:**

It may be necessary to remove the first element to slide the dipole in place. Attach the dipole with an 8-32 x 1 1/4" screw.



**Step 5:**

Attach the mounting U-bolt and Cradle in the correct polarity holes. Use the two 1/4-20 hex nuts and lock washers. **It is highly recommended to use a lubricant like WD-40 on the threads of the U-bolt. Stainless material will seize if not lubricated.**

## 911-ISP PARTS LIST

12-11-07

DESCRIPTION .....	QTY
BOOM, 1.0" X .063 X 17.9375" ALUM .....	1
ELEMENTS, 5/16" (INSTALLED) .....	4
FOLDED DIPOLE ASSEMBLY .....	1
U-BOLT, 2", SS & UNI-SADDLE .....	1
ASSEMBLY MANUAL .....	1

### IN HARDWARE BAGS:

NUT, 1/4-20, SS .....	2
LOCKWASHER, 1/4" SPLIT RING SS .....	2
SCREW, 8-32 X 1-1/4", SS .....	1

### M<sup>2</sup> ANTENNA SYSTEMS, INC.

4402 N. SELLAND AVE.

FRESNO, CA 93722

(559) 432-8873 FAX: 432-3059

www.m2inc.com Email: sales@m2inc.com