



UniFi® | SWITCH

Managed PoE+ Gigabit Switches with SFP

Models: US-8-150W, US-24-250W, US-24-500W,
US-48-500W, US-48-750W

Non-Blocking Throughput Switching Performance

Gigabit Ethernet RJ45 and SFP+/SFP Ports

Auto-Sensing IEEE 802.3af/at PoE

UniFi® SWITCH

Build and expand your network with Ubiquiti Networks® UniFi® Switch, part of the UniFi line of products. The UniFi Switch is a fully managed, PoE+ Gigabit switch, delivering robust performance and intelligent switching for growing networks.

Switching Performance

The UniFi Switch offers the forwarding capacity to simultaneously process traffic on all ports at line rate without any packet loss.

PoE+ Flexibility

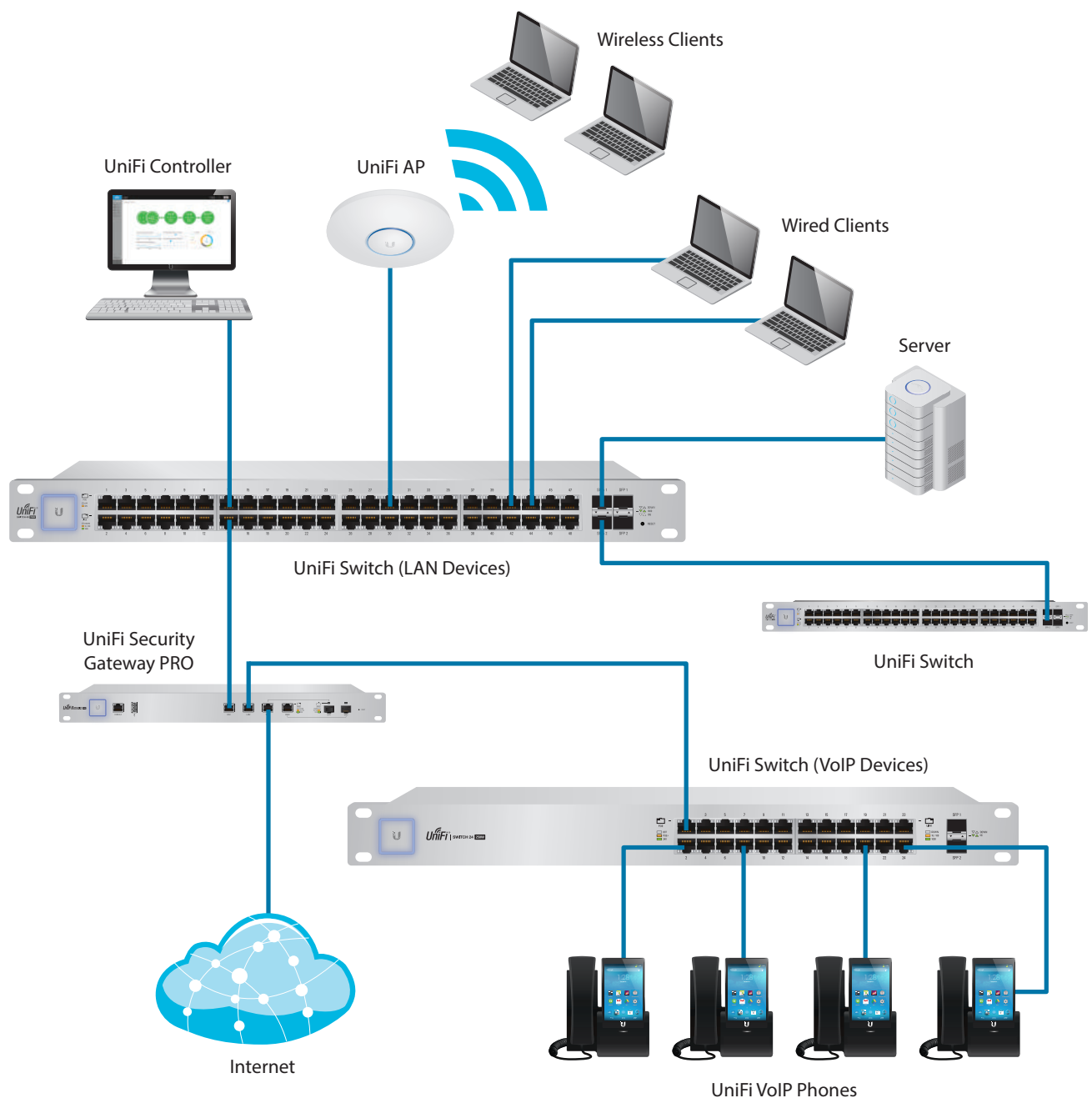
The UniFi Switch models are available with 8, 24, or 48 PoE Gigabit Ethernet ports of auto-sensing IEEE 802.3af/at or configurable 24V passive PoE to simplify your infrastructure.

By default, the UniFi Switch automatically detects 802.3af/at devices so they automatically receive PoE. For 24V passive PoE devices, manually enable 24V passive PoE using the UniFi Controller software.

Fiber Connectivity

The UniFi Switch provides fiber connectivity options for easy expansion of your networks. Each UniFi Switch model includes two SFP ports for uplinks of up to 1 Gbps.

Each 48-port model adds two SFP+ ports for high-capacity uplinks of up to 10 Gbps, so you can directly connect to a high-performance storage server or deploy a long-distance uplink to another switch.



UniFi Controller

Designed for convenient management, the UniFi Controller software allows admins to configure and monitor the UniFi Switch and other UniFi devices using a graphical user interface. You can download it from www.ubnt.com at no extra charge – there is no separate software, licensing, or support fee.

Multi-Site Management

A single instance of the UniFi Controller running in the cloud can manage multiple UniFi sites within a centralized interface. Each site is logically separated and has its own network monitoring, configuration, maps, statistics, and admin accounts.

Switch Configuration

You can access any managed UniFi Switch through the UniFi Controller to configure a variety of features:

- PoE setting per port
- Operation mode (switching, mirroring, or aggregate) per port
- Network/VLAN configuration
- Jumbo frame and flow control services
- Network settings
- Storm control setting per port
- Spanning tree configuration

Switch Port Status

You can also view status information for each port:

- Connection speed and duplex mode
- TX/RX data rates
- PoE status
- Network/VLAN setting



Dashboard

The *Dashboard* tab provides a visual representation of your network's status. Basic information is provided for each network segment.

Name/IP Address	IP Address	Port	Name	Status	Tx	Rx	PoE	Network/VLAN	Actions
US-80C	10.0.0.4	1	Port_1	1000 PPS (3.000)	0.000	0.000	auto	All	[Locate] [Restart] [Upgrade]
US-80C	10.0.0.118	2	Port_2	1000 PPS	0.000	0.000	auto	All	[Locate] [Restart] [Upgrade]
US-80C	10.0.0.117	3	Port_3	1000 PPS	0.000	0.000	auto	All	[Locate] [Restart] [Upgrade]
US-80C	10.0.0.116	4	Port_4	1000 PPS	0.000	0.000	auto	All	[Locate] [Restart] [Upgrade]
US-80C	10.0.0.115	5	Port_5	1000 PPS	0.000	0.000	auto	All	[Locate] [Restart] [Upgrade]
US-80C	10.0.0.114	6	Port_6	1000 PPS	0.000	0.000	auto	All	[Locate] [Restart] [Upgrade]
US-80C	10.0.0.113	7	Port_7	1000 PPS	0.000	0.000	auto	All	[Locate] [Restart] [Upgrade]
US-80C	10.0.0.112	8	Port_8	1000 PPS	0.000	0.000	auto	All	[Locate] [Restart] [Upgrade]
US-80C	10.0.0.111	9	Port_9	1000 PPS	0.000	0.000	auto	All	[Locate] [Restart] [Upgrade]
US-80C	10.0.0.110	10	Port_10	1000 PPS	0.000	0.000	auto	All	[Locate] [Restart] [Upgrade]
US-80C	10.0.0.109	11	Port_11	1000 PPS	0.000	0.000	auto	All	[Locate] [Restart] [Upgrade]
US-80C	10.0.0.108	12	Port_12	1000 PPS	0.000	0.000	auto	All	[Locate] [Restart] [Upgrade]
US-80C	10.0.0.107	13	Port_13	1000 PPS	0.000	0.000	auto	All	[Locate] [Restart] [Upgrade]
US-80C	10.0.0.106	14	Port_14	1000 PPS	0.000	0.000	auto	All	[Locate] [Restart] [Upgrade]
US-80C	10.0.0.105	15	Port_15	1000 PPS	0.000	0.000	auto	All	[Locate] [Restart] [Upgrade]
US-80C	10.0.0.104	16	Port_16	1000 PPS	0.000	0.000	auto	All	[Locate] [Restart] [Upgrade]

Device Configuration

The *Devices* screen displays the UniFi devices discovered by the UniFi Controller. You can access each managed device for device details and configuration.



Models

UniFi® | SWITCH 8 150W

Model: US-8-150W

- (8) Gigabit RJ45 Ports
- (2) SFP Ports
- Non-Blocking Throughput: 10 Gbps
- Switching Capacity: 20 Gbps
- Forwarding Rate: 14.88 Mpps
- Maximum Power Consumption: 150W
- Supports POE+ IEEE 802.3at/af and 24V Passive PoE
- Desktop-Mountable (Do not physically stack the US-8-150W.)



UniFi® | SWITCH 24 250W

Model: US-24-250W

- (24) Gigabit RJ45 Ports
- (2) SFP Ports
- (1) Serial Console Port (Reserved for Future Use)
- Non-Blocking Throughput: 26 Gbps
- Switching Capacity: 52 Gbps
- Forwarding Rate: 38.69 Mpps
- Maximum Power Consumption: 250W
- Supports POE+ IEEE 802.3at/af and 24V Passive PoE
- Rack-Mountable



UniFi® | SWITCH 24 500W

Model: US-24-500W

- (24) Gigabit RJ45 Ports
- (2) SFP Ports
- (1) Serial Console Port (Reserved for Future Use)
- Non-Blocking Throughput: 26 Gbps
- Switching Capacity: 52 Gbps
- Forwarding Rate: 38.69 Mpps
- Maximum Power Consumption: 500W
- Supports POE+ IEEE 802.3at/af and 24V Passive PoE
- Rack-Mountable



UniFi® | SWITCH 48 500W

Model: US-48-500W

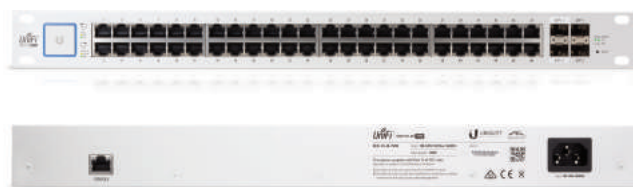
- (48) Gigabit RJ45 Ports
- (2) SFP+ Ports
- (2) SFP Ports
- (1) Serial Console Port (Reserved for Future Use)
- Non-Blocking Throughput: 70 Gbps
- Switching Capacity: 140 Gbps
- Forwarding Rate: 104.16 Mpps
- Maximum Power Consumption: 500W
- Supports POE+ IEEE 802.3at/af and 24V Passive PoE
- Rack-Mountable



UniFi® | SWITCH 48 750W

Model: US-48-750W

- (48) Gigabit RJ45 Ports
- (2) SFP+ Ports
- (2) SFP Ports
- (1) Serial Console Port (Reserved for Future Use)
- Non-Blocking Throughput: 70 Gbps
- Switching Capacity: 140 Gbps
- Forwarding Rate: 104.16 Mpps
- Maximum Power Consumption: 750W
- Supports POE+ IEEE 802.3at/af and 24V Passive PoE
- Rack-Mountable



Other Available UniFi Products



UniFi Cloud Key



UniFi VoIP Phone Executive



UniFi AC AP Pro

Hardware Specifications

US-8-150W		
Dimensions	204 x 43 x 235 mm (8.03 x 1.69 x 9.25")	
Weight	1.7 kg (3.75 lb)	
Total Non-Blocking Throughput	10 Gbps	
Switching Capacity	20 Gbps	
Forwarding Rate	14.88 Mpps	
Max. Power Consumption	Including PoE Output	Excluding PoE Output
	150W	20W
Power Method	100-240VAC/50-60 Hz, Universal Input	
Power Supply	AC/DC, Internal, 150W DC	
LEDs Per Port	RJ45 Data Ports	SFP Data Ports
	PoE, Speed/Link/Activity	Speed/Link/Activity
Networking Interfaces	(8) 10/100/1000 Mbps RJ45 Ethernet Ports (2) 1 Gbps SFP Ethernet Ports	
Management Interface	Ethernet In-Band	
Certifications	CE, FCC, IC	
ESD/EMP Protection	Air: ± 24 kV, Contact: ± 24 kV	
Operating Temperature	-5 to 40° C (23 to 104° F)	
Operating Humidity	5 to 95% Noncondensing	
Shock and Vibration	ETSI300-019-1.4 Standard	

PoE Per Port	
PoE Interfaces	POE+ IEEE 802.3af/at (Pins 1, 2+; 3, 6-) 24VDC Passive PoE (Pins 4, 5+; 7, 8-)
Max. PoE+ Wattage per Port by PSE	34.2W
Voltage Range 802.3at Mode	50–57V
Max. Passive PoE Wattage per Port	17W
24V Passive PoE Voltage Range	20-27V