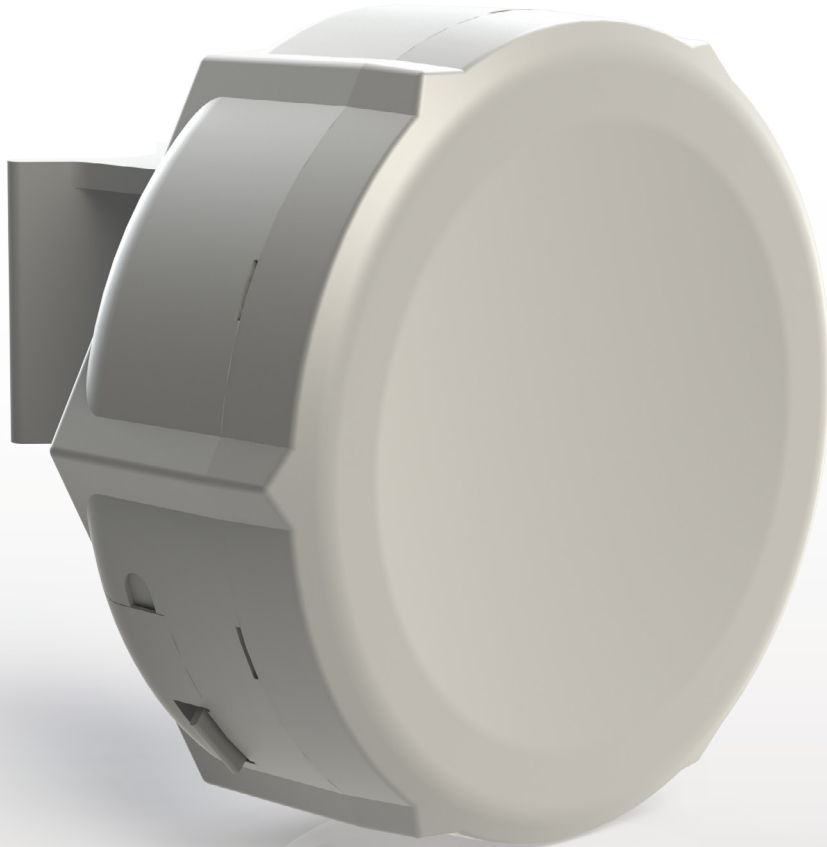


SXTG_{-5HnD}



SXTG is a low cost, high speed 5GHz outdoor wireless device, with a Gigabit port, to fully utilize the capacity of 802.11n. SXTG can be used for point to point links or as a CPE for point to multipoint installations.

Complete with a ready to mount enclosure and built-in 16dBi antenna, the package contains everything you need to make a point to point link, or connect to an AP.

Features	G-5HnD (Gigabit, 5Ghz, High power wireless, 802.11n, Dual-chain)
CPU	Atheros AR7241 400MHz CPU
Memory	32MB DDR SDRAM onboard memory
Ethernet	One 10/100/1000 Gigabit Ethernet port, L2MTU frame size up to 4076
Wireless cards	Onboard dual chain 5GHz 802.11a/n Atheros AR9280 wireless module; 10kV ESD protection on each RF port
Extras	Reset switch, beeper, USB 2.0 port, voltage and temperature monitors
LEDs	Power LED, Ethernet LED, 5 wireless signal LED
Power options	Power over Ethernet: 8-30V DC Packaged with 24V DC 0.8A power adapter and passive PoE injector
Dimensions	140x140x56mm. Weight without packaging, adapters and cables: 265g
Power consumption	Up to 7W
Operating Temp	-30C .. +80C
OS	MikroTik RouterOS, Level3 license
Package contains	SXTG wireless device with integrated antenna, pole mounting bracket, mounting ring, Gigabit PoE injector, power adapter, quick setup guide
Certifications	FCC, CE, ROHS

Antennas	Dual polarization 5GHz antenna, 16 ±2 dBi, - 35 dB port to port isolation
TX power	802.11g: 26dBm @ 6Mbps to 22 dBm @ 54 Mbps 802.11n: 25dBm @ MCS0 to 18dBm @ MCS7
Modulations	OFDM: BPSK, QPSK, 16 QAM, 64QAM DSSS: DBPSK, DQPSK, CCK