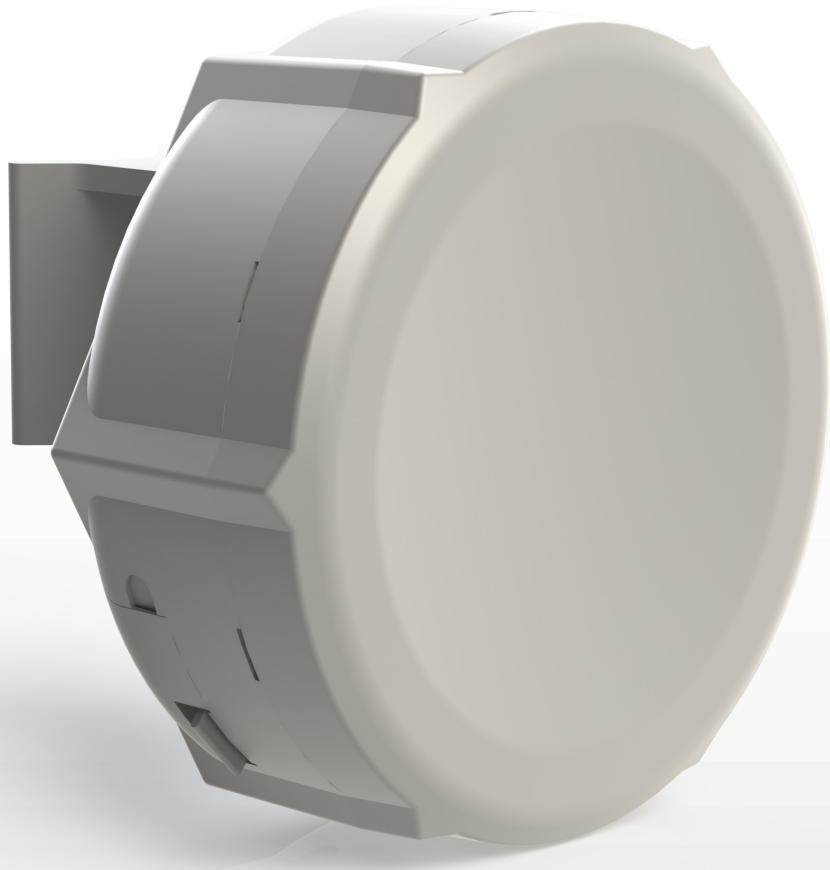


SXT Lite2

Our best price/performance 2Ghz CPE. The SXT Lite2 (product code RBSXT2nDr2), 2Ghz 10dBi integrated antenna with 600MHz CPU, 64MB RAM and RouterOS L3 installed.

SXT Lite2 is a low cost, high transmit power 2GHz outdoor wireless device. It can be used for point to point links or as a CPE for point to multipoint installations.



Model	RBSXT2nDr2
Features	2nDr2 (2GHz, 802.11n, Dual Chain, hardware revision two)
CPU	Atheros AR9344 600MHz CPU
Memory	64MB DDR2 SDRAM onboard memory
Ethernet	One 10/100 Ethernet port, L2MTU frame size up to 4076
Wireless cards	Onboard dual chain 2GHz 802.11b/g/n Atheros wireless module; 10kV ESD protection on each RF port
Extras	Reset switch, buzzer
LEDs	Power LED, Ethernet LED, 5 wireless signal LED
Power options	Power over Ethernet: 8-30V DC Packaged with 24V DC 0.38A power adapter and passive PoE injector
Dimensions	140x140x56mm.
Weight	Without packaging, adapters and cables: 258g, total package: 616g
Power consumption	Up to 8W
Operating Temp	-30C .. +80C
OS	MikroTik RouterOS, Level3 license
Package contains	one SXT Lite2 unit, PoE injector, 24V power adapter, mounting bracket, metallic mounting loop.
Certifications	FCC, CE, ROHS
Antenna	Dual polarization 2GHz antenna, 10dBi, -18 dB port to port isolation, Beam-Width: H-Plane, E-Plane typ. 60°
RX sensitivity	802.11b/g : -95 dBm @ 11Mbps to -80 dBm @ 54 Mbps 802.11n : -95 dBm @ MCS0 20MHz to -77 dBm @ MCS7 40MHz
TX power	802.11b/g : 27dBm @ 11Mbps to 24Bm @ 54 Mbps 802.11n : 27dBm @ MCS0/8 to 23dBm @ MCS7/15
Modulations	OFDM: BPSK, QPSK, 16 QAM, 64QAM DSSS: DBPSK, DQPSK, CCK