



# Product Datasheet

## EZ-BRIDGE-Lite™

The EZ-Bridge-Lite™ is a high power outdoor 250mW wireless bridge system operating in the 2.4GHz unlicensed frequency spectrum providing real world thrupt up to 15 Mb/sec. It complies with the 802.11b and g standards to insure interoperability. The EZ-Bridge-Lite™ creates a transparent wireless bridge between two networks up to 4 miles apart with good line of sight. It supports multiple MAC addresses and DHCP across the wireless link. It is the perfect plug and play solution for connecting the networks in two or more buildings, internet access sharing, remote video surveillance or remote network access. Multiple EZ-Bridge-Lite™ units can be connected in a mesh configuration to allow interconnecting more than two sites.



With its password verification, MAC address authentication, SSID suppression and advanced WPA2 encryption, the system provides the best available wireless data security.

Installation is a snap because of the plug and play features which have been built into the system. Just install the antennas and plug in the power supplies. The units will automatically find their peer and create a secure wireless network link. If changes to the pre-configured settings are desired, they can be easily done thru the built-in web interface from any point on either side of the network. There are no drivers or software that needs to be loaded to the computer.

The EZ-Bridge-Lite™ comes complete with all the electronics that are needed for a point to point wireless network bridge installation; including 2 powerful 14dBi antennas with built-in 802.11bg high power electronics, Bracket Kits which accommodate pole or wall mounting, Cat5e rated POE (Power Over Ethernet) power inserters and 18VDC auto-ranging power supplies. Customer needs to supply CAT5 cabling between the power inserter and the antenna.

FEATURES	BENEFITS
High Power 250mW Electronics and powerful 14dBi antenna	Operation up to 3 miles with good line of sight and up to 15 Mb/sec
True Plug and Play	No driver needed. Pre-configured at the factory for automatic peer to peer communications
64 and 128bit WEP, WPA and WPA2 Encryption	Most powerful data security available
Web-based configuration	Remotely change device configuration or update firmware from anywhere on the network
Power over ethernet	Antennas can be mounted up to 100meter (300') from the power source
Transparent Bridge	Appears to network devices as if an Ethernet cable has been installed between the 2 network nodes. Passes DHCP and supports multiple MAC addresses

# TECHNICAL SPECIFICATIONS

## Data Rates

802.11g: 54 / 48 / 36 / 24 / 12 / 9 / 6 Mbps  
802.11b: 11 / 5.5 / 2 / 1 Mbps

## Standards

IEEE802.11b/g, 802.3, 802.3u

## Power Requirements

Power Supply: 100-240VAC 50/60Hz  
EZ-Bridge: 18VDC/0.8A

## Regulatory Certifications

FCC Part 15 / UL

## RF Frequency Band

2400 ~ 2497 MHz

## Media Access Protocol

Carrier Sense Multiple Access with Collision Avoidance (CSMA/CA)

## Modulation Technology

Direct Sequence Spread Spectrum (DSSS)  
802.11g: OFDM (64QAM, 16QAM, QPSK, BPSK)  
802.11b: DSSS (CCK, DQPSK, DBPSK)

## Operating Channels

11 for North America, 14 for Japan

## Receive Sensitivity (Typical)

802.11g: -73 +2dBm @ 54Mbps  
802.11b: -84 + 2dBm @ 11Mbps

## Available Transmit Power

802.11g: 50, 100mW  
802.11b: 100, 150, 200, 250mW

## Antenna

14dBi Panel Antenna, 35deg AZ and 25deg EL  
Beamwidth, >20dB front to back

## Network Topology

Ad-Hoc, Infrastructure

## Operation Mode

Point to Point Bridge, Access Point, Client

## Interface

10/100Mbps RJ-45 LAN Port

## IP Auto Configuration

DHCP Client

## Security

MAC Address Filtering, WEP/WPA encryption,  
Hide SSID in beacons, Layer 2 isolation

## Management Configuration

Web-based configuration (HTTP)  
Console configuration (SSH)  
SNMP Protocol

## Firmware Upgrade

Upgrade firmware via web browser

## Antenna Physical Dimensions (L x W x D)

314mm x 187mm x 65mm  
12.4" x 7.3" x 2.5"

## Complete System Weight

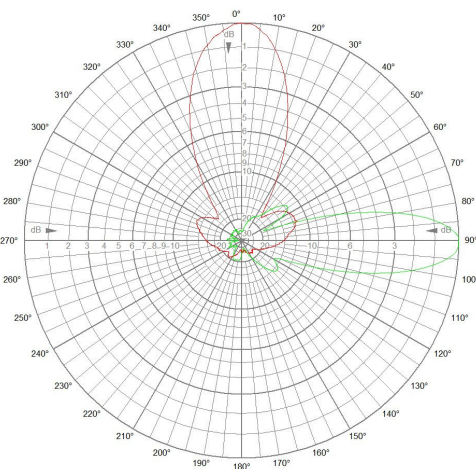
3 kg (7 lbs )

## Temperature Range

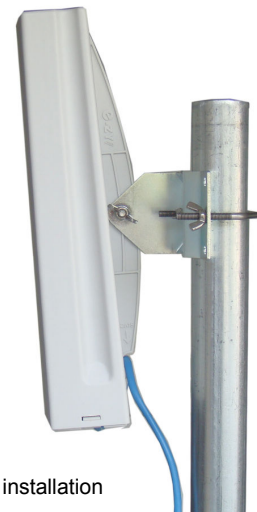
Operating: -30°C to 50°C (-22°F to 122°F)  
Storage: -40°C to 70°C (-40°F to 158°F)

### Notes:

- All shipments F.O.B. Draper, UT 84020
- EZ-Bridge carries a 1 year warranty



EZ-Bridge-Lite™ 14dBi Antenna Pattern



EZ-Bridge-Lite™ tool-less installation