

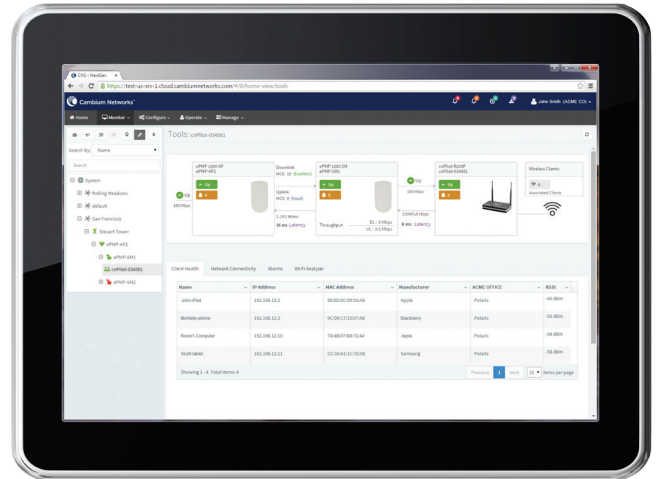
# cnPilot™ Home & Business R200 and R201

## SIMPLYING THE NETWORK.

Extending the service provider's indoor reach and streamlining components for a simplified indoor network. Versatile multi-function WLAN access points, offering remote visibility and end-to-end troubleshooting, extend the service provider's indoor reach.

**Cloud Management:** backed by Cambium's *cnMaestro*™ cloud manager offering end-to-end visibility of the network and customer devices.

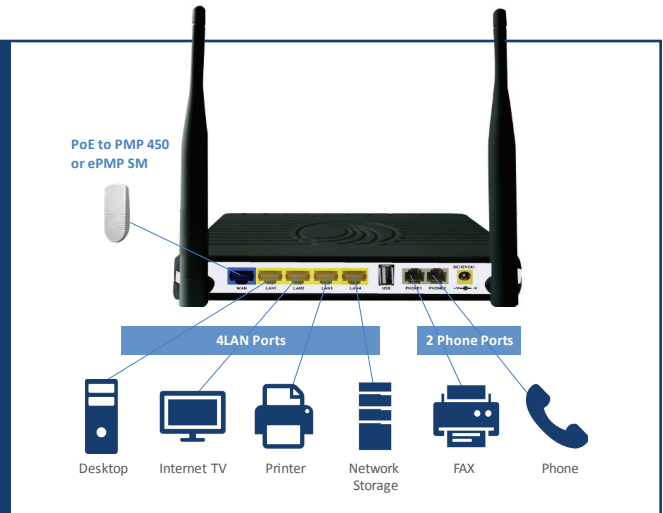
- Out-of-the box zero touch onboarding
- Stateful alarms and dashboard views
- Multiple management options available including cloud-based, TR-069, SNMP and an enriched set of RESTful interfaces



**Highly Integrated:** the WLAN routers simplify the indoor home network-combing in one box commonly needed functions often put together from different manufacturers.

Connect up to

- 4 LAN Ports
- 2 Phone Ports
- 64 Wireless Devices



**End-to-End Troubleshooting:** Single dashboard view and rich statistics ensure rapid root cause detection and issue resolution

- One-click functionality reveals the health of all network nodes related to the problem area
- Troubleshoot end user client connectivity on any WLAN from a single console
- No truck roll required to debug wired or wireless connectivity configurations

**Multiple SSIDs and Service Provider (community) SSID's:** Enables service providers to offer SSIDs across their network as users travel from home, to outdoor public hotspot and to local business / small enterprise or campus. This allows network operators to promote their brand throughout their customers' daily journeys.



R200



R201

## WLAN ROUTERS TO SUIT FUNCTIONS AND BUDGETS

|                 | R200                           | R200P                          | R201                                | R201P                               | R201W                               |
|-----------------|--------------------------------|--------------------------------|-------------------------------------|-------------------------------------|-------------------------------------|
| WLAN Routers    | 802.11n<br>Single band 2.4 GHz | 802.11n<br>Single band 2.4 GHz | 802.11ac<br>Dual band 2.4 and 5 GHz | 802.11ac<br>Dual band 2.4 and 5 GHz | 802.11ac<br>Dual band 2.4 and 5 GHz |
| ATA - for Voice | ✓                              | ✓                              | ✓                                   | ✓                                   |                                     |
| Cambium PoE out |                                | ✓                              |                                     | ✓                                   | ✓                                   |

## Specifications

| FEATURES   | R200  | R200P | R201  | R201P | R201W |
|--|---|-------|---|-------|-------|
| <b>KEY INTERFACES</b>  |   |       |   |       |       |
| TELEPHONE INTERFACES<br>2 FXS ports, RJ11                                | ✓   | ✓     | ✓   | ✓     |       |
| WAN  | 1 x 10/100 RJ45                                   |       | 1 x GigE, RJ45                                    |       |       |
| LAN  | 4 x 10/100BaseT, RJ45                             |       | 4 x GigE, RJ45                                    |       |       |
| USB  | 1 USB 2.0 Host Port for shared printer or storage |       | 1 USB 2.0 Host Port for shared printer or storage |       |       |
| WiFi   | 2x2 Single band 11n 2.4 GHz                       |       | 2x2 Dual band 11ac 2.4 (11n) and 5 GHz (11ac)     |       |       |
| SSIDs<br>4 Per Radio   | 4   |       | 8   |       |       |
| PoE OUTPUT<br>Powering Cambium's PM<br>450 and ePMP Subscriber<br>Module |   | ✓     |   | ✓     | ✓     |
| RESET BUTTON<br>Factory reset button                                     | ✓   | ✓     | ✓   | ✓     | ✓     |
| LED INDICATORS:<br>Power   | ✓   | ✓     | ✓   | ✓     | ✓     |
| WLAN   | ✓   | ✓     | ✓   | ✓     | ✓     |
| LAN 1-4  | ✓   | ✓     | ✓   | ✓     | ✓     |
| Phone 1-2  | ✓   | ✓     | ✓   | ✓     | n/a   |

# Specifications

| FEATURES   | R200         | R200P | R201            | R201P | R201W |
|--|--------------|-------|-----------------|-------|-------|
| <b>Network</b>   |              |       |                 |       |       |
| PROTOCOL<br><i>DHCP/ PPPoE/ Static IP</i>  | ✓            | ✓     | ✓               | ✓     | ✓     |
| <i>PPTP/L2TP VPN</i>   | ✓            | ✓     | ✓               | ✓     | ✓     |
| <i>Dynamic DNS/DNS SRV (RFC 1706 and RFC 2782)</i>   | ✓            | ✓     | ✓               | ✓     | ✓     |
| <i>DMZ</i>   | ✓            | ✓     | ✓               | ✓     | ✓     |
| <i>NAT Traversal (Static NAT Route or by STUN)</i>   | ✓            | ✓     | ✓               | ✓     | ✓     |
| <i>DHCP Client and DHCP server</i>   | ✓            | ✓     | ✓               | ✓     | ✓     |
| <i>MAC address Clone</i>   | ✓            | ✓     | ✓               | ✓     | ✓     |
| <i>IP Conflict Detection</i>   | ✓            | ✓     | ✓               | ✓     | ✓     |
| ROUTE MODE<br><i>Route/Bridge, customer configurable</i>   |              |       |                 |       |       |
| <i>Support IEEE 802.1Q VLAN/802.1p</i>   | ✓            | ✓     | ✓               | ✓     | ✓     |
| <i>Layer 3 (DSCP) settings for SIP, RTP and Data</i>   |              |       |                 |       |       |
| QUALITY OF SERVICE<br><i>Support IEEE 802.1Q VLAN/802.1p</i>                                       | ✓            | ✓     | ✓               | ✓     | ✓     |
| <i>Layer 3 (DSCP) settings for SIP, RTP and Data</i>   |              |       |                 |       |       |
| <b>Wireless INTERFACES</b>   |              |       |                 |       |       |
| PROTOCOL   | 802.11 b/g/n |       | 802.11 b/g/n/ac |       |       |
| SECURITY<br><i>WEP, WPA-PSK (TKIP), WPA-PSK (AES), WPA2-PSK (TKIP), WPA2-PSK (AES), Mixed mode</i> | ✓            | ✓     | ✓               | ✓     | ✓     |
| OTHERS<br><i>AP isolation, MBSSID AP isolation, WMM, MAC Filter, WDS, WPS</i>                      | ✓            | ✓     | ✓               | ✓     | ✓     |

# Specifications

| FEATURES  | R200 | R200P | R201 | R201P | R201W |
|---|------|-------|------|-------|-------|
| <b>Call Features</b>  |      |       |      |       |       |
| IP SIGNALING<br><i>SIP V2 (RFC3261/3262/<br/>3263/3264)</i>   | ✓    | ✓     | ✓    | ✓     |       |
| VOICE CODEC<br><i>G.711 (A-law, <math>\mu</math>-law), G.722,<br/>G.723, G.729</i>  | ✓    | ✓     | ✓    | ✓     |       |
| FAX OVER IP<br><i>Real Time FAX over IP via<br/>T.38</i>  | ✓    | ✓     | ✓    | ✓     |       |
| <i>T.30 Fax with G.711</i>  | ✓    | ✓     | ✓    | ✓     |       |
| VOICE FEATURES<br><i>Adaptive jitter buffer<br/>management</i>  | ✓    | ✓     | ✓    | ✓     |       |
| <i>Voice Activity Detection</i>   | ✓    | ✓     | ✓    | ✓     |       |
| <i>Comfort Noise<br/>Generation</i>   | ✓    | ✓     | ✓    | ✓     |       |
| <i>Echo Cancellation</i>  | ✓    | ✓     | ✓    | ✓     |       |
| CALL FEATURES<br><i>3-way Conference</i>  | ✓    | ✓     | ✓    | ✓     |       |
| <i>Call hold, Call<br/>forwarding, Call transfer,<br/>Call waiting,</i>   | ✓    | ✓     | ✓    | ✓     |       |
| <i>Speed dial, Hotline, Dial<br/>plan</i>   | ✓    | ✓     | ✓    | ✓     |       |
| <i>Caller ID, Black list, Call log</i>  | ✓    | ✓     | ✓    | ✓     |       |
| <b>NETWORK MANAGEMENT</b>   |      |       |      |       |       |
| Integrated Management<br><i>cnMaestro Cloud<br/>Based Management for<br/>Configuration, Provisioning<br/>and daily Monitoring</i> | ✓    | ✓     | ✓    | ✓     | ✓     |
| CONFIGURATION<br><i>Web GUI interface</i>   | ✓    | ✓     | ✓    | ✓     | ✓     |
| <i>Interactive Voice Response<br/>(IVR)</i>   | ✓    | ✓     | ✓    | ✓     | ✓     |
| AUTO PROVISIONING<br><i>TFTP, HTTP</i>  | ✓    | ✓     | ✓    | ✓     | ✓     |
| SNMP<br><i>SNMP v2</i>  | ✓    | ✓     | ✓    | ✓     | ✓     |
| TIME<br><i>SNTP</i>   | ✓    | ✓     | ✓    | ✓     | ✓     |
| ADMIN<br><i>Administrator and User</i>  | ✓    | ✓     | ✓    | ✓     | ✓     |

# Specifications

| FEATURES  | R200  | R200P | R201  | R201P | R201W  |
|---|---|-------|---|-------|--|
| NETWORK MANAGEMENT <i>(continued)</i>   |   |       |   |       |  |
| ALT MGMT<br><i>TR069</i>  | ✓   | ✓     | ✓   | ✓     | ✓  |
| SYSLOG<br><i>Local, Remote</i>  | ✓   | ✓     | ✓   | ✓     | ✓  |
| POWER SUPPLY  |   |       |   |       |  |
| AC/DC ADPATOR   | AC INPUT: 100 -240V, 50-60 Hz<br>DC OUTPUT: 12V, 2A |       | AC INPUT: 100 -240V, 50-60 Hz<br>DC OUTPUT: 12V, 2A |       | AC INPUT: 100 -240V,<br>50-60 Hz<br>DC OUTPUT: 12V, 3A |
| ENVIRONMENTAL   |   |       |   |       |  |
| OPERATION TEMP<br><i>+5°C to +45°C 5°C to +45°C</i>   | ✓   | ✓     | ✓   | ✓     | ✓  |
| STORAGE TEMP<br><i>-25°C to +85°C</i>   | ✓   | ✓     | ✓   | ✓     | ✓  |
| RELATIVE HUMIDITY<br><i>10%-90% No<br/>Condensing</i>   | ✓   | ✓     | ✓   | ✓     | ✓  |
| Weight  | 0.75 kg   |       | 0.8 kg  |       |  |
| DIMENSION (H x W x D)   | 180 mm x 110 mm x 30 mm                             |       | 175 mm x 155 mm x 35 mm                             |       |  |
| REGULATORY  |   |       |   |       |  |
| EMC<br><i>FCC part 15B Class B, ETSI<br/>EN 301 489-1, ETSI EN<br/>301 489-17, EN61000-6-1,<br/>EN61000-6-3, CE, RoHS</i> | ✓   | ✓     | ✓   | ✓     | ✓  |
| SAFETY<br><i>IEC 60950-1, UL 60950-1,<br/>EN 60950-1,</i>   | ✓   | ✓     | ✓   | ✓     | ✓  |