



# airVision™

IP Camera/NVR Management System

Camera Models: airCam, airCam Dome, airCam Mini

Camera/NVR Management Software

Versatile Camera Settings

Detailed Statistic Reporting

Advanced Analytics



# airCam Cameras

## Breakthrough Price/ Performance IP Camera Product Line

The AirCam line of H.264 megapixel cameras combine advanced industrial design, powerful performance with market leading cost-effectiveness. There are a variety of cameras to choose from for optimizing application specific deployments.

### airCam

- Wall Mount/Ceiling Mount
- 30 FPS
- 1MP/HDTV 720p
- 4.0mm / F1.5
- Powered through Ethernet

Available in single-pack and 3-pack.

### airCam Dome

- Built-in Microphone
- Ceiling Mount
- 30 FPS
- 1MP/HDTV 720p
- 4.0mm / F1.5
- Powered through Ethernet

Available in single-pack and 3-pack.

### airCam Mini

- Built-in Microphone
- Desktop Mount
- 30 FPS
- 1MP/HDTV 720p
- 3.6mm / F2.5
- Powered through Ethernet

Available in single-pack.

All models include:

- Power over Ethernet Adapter
- airVision Software Installation CD



# airVision Software

## Next Generation H.264 IP Camera and NVR Management System

AirVision™ provides advanced recording capabilities and powerful analytics with a breakthrough web-based user interface. Combined with Ubiquiti's powerful line of H.264 megapixel airCam IP cameras, airVision is a revolutionary price/performance IP video surveillance system.

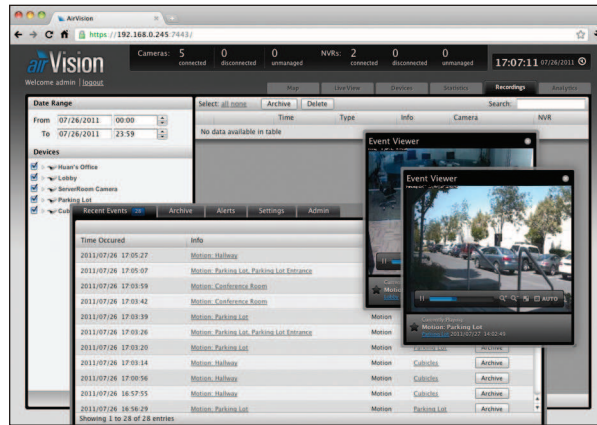
### Features

**Feature Packed User Interface** Accessible from any web browser, airVision's user interface was designed to be easy to use yet packed with advanced features. Once the airVision NVR Server package (included) is installed on any computer with Windows or Linux, the administrator can remotely access the powerful airVision Controller user interface through any web browser. AirVision's user interface is incredibly intuitive and loaded with powerful features such as detailed statistical reporting, multiple views, versatile camera settings, advanced analytics, and customizable event recordings.

**Secure and Reliable** Access airVision's convenient yet secure user interface through your web browser via HTTPS. HTTPS encrypts and decrypts user page requests and pages that are returned by the Web server.

**Cost-Effective Solution** Shattering conventional industry thinking, Ubiquiti offers AirVision's powerful IP surveillance system completely free of charge. No huge upfront costs, no monthly subscription fees.

**Breakthrough Price/ Performance IP Camera Product Line** The AirCam line of H.264 megapixel cameras combine advanced industrial design and powerful performance.



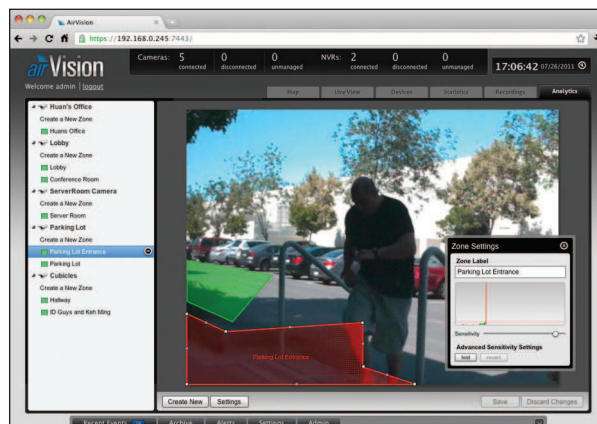
### Event Recordings

AirVision gives you a variety of options and settings to customize what your cameras record.



### Detailed Statistical Reporting

Quickly assess important camera activity and NVR performance with easy-to-read visualized graphs.



### Advanced Analytics

Customize your own motion detection zones. You can place several zones and set their alarm sensitivities as high or low as the situation demands.

# Specifications

airCam Specifications	
Dimensions	158 x 61.5 x 58.5 mm (without mounting arm) 264 x 61.5 x 58.5 mm (with mounting arm)
Weight	240 g (196 g without mounting arm)
Ports	(1) 10/100 Ethernet
Sensor	Progressive Scan RGB CMOS 1/4"
Lens	4.0mm/ F1.5
Horizontal of View	47°
Ethernet Ports	Auto MDIX, autosensing 10/100 Mbps
Power LED	Orange
Link/Active LED	Green
Buttons	Factory Reset Button
Power Method	Passive Power over Ethernet (12-24V)
Power Supply	24V/0.5A PoE Adapter included
Maximum Power Consumption	2.4 Watts
Certifications	CE, FCC, IC
Mounting	Wall/Ceiling Adapter Kit included
Operating Temperature	-40 to 70° C (-40 to 158° F)
Operating Humidity	20 - 80% Noncondensing

Video	
Video Compression	H.264
Resolution	1MP/HDTV 720p
Maximum Frame Rate	30 FPS
Image Setting	Brightness, Contrast, Sharpness, Saturation, 50Hz/60Hz

General	
Processor	ARM-based 32-bit RISC
Memory	128MB DDR2 SDRAM, 8MB Flash
Connector	RJ-45 10BASE-T/100BASE-TX PoE
Maximum Active Array Size	1280x800
View Angle	47° (H) 31° (V) 54° (D)

Network	
Security	Multiple user access levels with password protection, User access log
Supported Protocols	IPv4/v6, HTTP, UPnP, DNS, NTP, RTSP, DHCP, TCP, UDP, IGMP, RTCP, ICMP, ARP



# Specifications

airCam Dome Specifications	
Dimensions	100 x 94 mm (length x diameter)
Weight	179.66 g
Ports	(1) 10/100 Ethernet, Micro SD Card Slot
Sensor	Progressive Scan RGB CMOS 1/4"
Lens	4.0mm/F1.5
Horizontal of View	47°
Power LED	Orange
Link/Active LED	Green
Buttons	Factory Reset Button
Power Method	Passive Power over Ethernet (12-24V)
Power Supply	24V/0.5A PoE Adapter included
Maximum Power Consumption	3.5 Watts
Certifications	CE, FCC, IC
Mounting	Ceiling Mount
Operating Temperature	0 to 40° C (32 to 104° F)
Operating Humidity	20 - 80% Noncondensing

Video	
Video Compression	H.264
Resolution	1MP/HDTV 720p
Maximum Frame Rate	30 FPS
Image Setting	Brightness, Contrast, Sharpness, Saturation, Mirror, Flip, 50Hz/60Hz

Audio	
Built-In Microphone	ECM (Omni.); Sensitivity=-42±3dB ; S/N=60dBA

General	
Processor	ARM-based 32-bit RISC
Memory	128MB DDR2 SDRAM, 8MB Flash
Local Storage	Micro SD Card Slot (card not included)
Maximum Active Array Size	1280x800
View Angle	47° (H) 31° (V) 54° (D)

Network	
Security	Multiple user access levels with password protection, User access log
Supported Protocols	IPv4/v6, HTTP, UPnP, DNS, NTP, RTSP, DHCP, TCP, UDP, IGMP, RTCP, ICMP, ARP



# Specifications

## airCam Mini Specifications

Dimensions	55 x 55 x 125 mm
Weight	166 g
Ports	(1) 10/100 Ethernet, Micro SD card slot
Sensor	Progressive Scan RGB CMOS ¼"
Lens	3.6mm/ F2.8
Horizontal of View	52°
Ethernet Ports	Auto MDIX, autosensing 10/100 Mbps
Power LED	Orange
Link/Active LED	Green
Buttons	Factory Reset Button
Power Method	Passive Power over Ethernet (12-24V)
Power Supply	24V/0.5A PoE Adapter included
Maximum Power Consumption	3 Watts
Certifications	CE, FCC, IC
Mounting	Desk Mount
Operating Temperature	0 to 40° C (32 to 104° F)
Operating Humidity	20 - 80% Noncondensing

## Video

Video Compression	H.264
Resolution	1MP/HDTV 720p
Maximum Frame Rate	30 FPS
Image Setting	Brightness, Contrast, Sharpness, Saturation, Mirror, Flip, 50Hz/60Hz

## Audio

Microphone	ECM (Omni.); Sensitivity=-42±3dB ; S/N=60dBA
------------	--

## General

Processor	ARM-based 32-bit RISC
Memory	128MB DDR2 SDRAM, 8MB Flash
Local Storage	Micro SD Card Slot (Card not included)
Maximum Active Array Size	1280x800
View Angle	52° (H) 34° (V) 59° (D)

## Network

Security	Multiple user access levels with password protection, User access log
Supported Protocols	IPv4/v6, HTTP, UPnP, DNS, NTP, RTSP, DHCP, TCP, UDP, IGMP, RTCP, ICMP, ARP

